



US010602927B2

(12) **United States Patent**  
**Krueger**

(10) **Patent No.:** **US 10,602,927 B2**  
(45) **Date of Patent:** **\*Mar. 31, 2020**

(54) **OCULAR-PERFORMANCE-BASED HEAD  
IMPACT MEASUREMENT USING A  
FACEGUARD**

(71) Applicant: **Wesley W. O. Krueger**, San Antonio,  
TX (US)

(72) Inventor: **Wesley W. O. Krueger**, San Antonio,  
TX (US)

(\*) Notice: Subject to any disclaimer, the term of this  
patent is extended or adjusted under 35  
U.S.C. 154(b) by 0 days.

This patent is subject to a terminal dis-  
claimer.

(21) Appl. No.: **16/351,326**

(22) Filed: **Mar. 12, 2019**

(65) **Prior Publication Data**

US 2019/0200862 A1 Jul. 4, 2019

**Related U.S. Application Data**

(63) Continuation-in-part of application No. 16/264,242,  
filed on Jan. 31, 2019, which is a continuation-in-part  
(Continued)

(51) **Int. Cl.**  
**A61B 3/18** (2006.01)  
**A61B 5/11** (2006.01)  
(Continued)

(52) **U.S. Cl.**  
CPC ..... **A61B 3/18** (2013.01); **A42B 3/046**  
(2013.01); **A42B 3/0433** (2013.01); **A42B 3/20**  
(2013.01);  
(Continued)

(58) **Field of Classification Search**  
CPC ..... A61B 3/18; A61B 3/028; A61B 3/112;  
A61B 3/113; A61B 5/1121; A61B 5/6803;  
A42B 3/0433; A42B 3/20; A63B 71/10  
(Continued)

(56) **References Cited**

**U.S. PATENT DOCUMENTS**

3,616,463 A 11/1971 Theodore et al.  
4,817,633 A 4/1989 McStravick et al.  
(Continued)

**FOREIGN PATENT DOCUMENTS**

WO 2013-117727 8/2013

**OTHER PUBLICATIONS**

Allison, et al. "Combined Head and Eye Tracking System for  
Dynamic Testing of the Vestibular System" IEEE Transactions on  
Biomedical Engineering, vol. 43, No. 11, Nov. 1996, all pages.

(Continued)

*Primary Examiner* — James R Greece

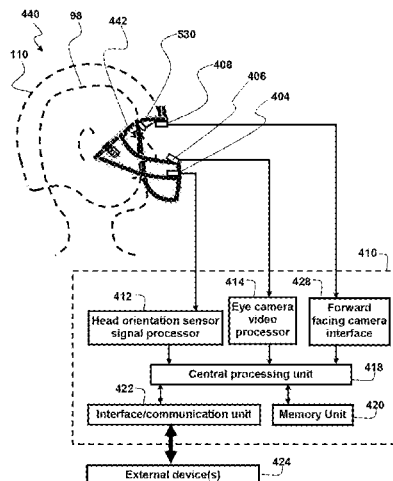
(74) *Attorney, Agent, or Firm* — Kilpatrick Townsend &  
Stockton LLP

(57)

**ABSTRACT**

A system or method for measuring human ocular perfor-  
mance can be implemented using an eye sensor, a head  
orientation sensor, and an electronic circuit. The device is  
configured for measuring vestibulo-ocular reflex, pupillom-  
etry, saccades, visual pursuit tracking, vergence, eyelid  
closure, dynamic visual acuity, retinal image stability, foveal  
fixation stability, focused position of the eyes or visual  
fixation of the eyes at any given moment and nystagmus.  
The eye sensor comprises a video camera that senses vertical  
movement and horizontal movement of at least one eye. The  
head orientation sensor senses pitch and yaw in the range of  
frequencies between 0.01 Hertz and 15 Hertz. The system is  
implemented as part of a faceguard.

**20 Claims, 11 Drawing Sheets**



**Related U.S. Application Data**

of application No. 15/713,418, filed on Sep. 22, 2017, now Pat. No. 10,231,614, which is a continuation-in-part of application No. 15/162,300, filed on May 23, 2016, now Pat. No. 9,788,714, which is a continuation-in-part of application No. 14/326,335, filed on Jul. 8, 2014, now Pat. No. 9,370,302, said application No. 16/264,242 is a continuation-in-part of application No. 13/749,873, filed on Jan. 25, 2013, now abandoned.

**(51) Int. Cl.**

**A61B 5/00** (2006.01)

**A61B 3/113** (2006.01)

**A61B 3/028** (2006.01)

**A61B 3/11** (2006.01)

**A63B 71/10** (2006.01)

**A42B 3/04** (2006.01)

**A42B 3/20** (2006.01)

**A61B 5/16** (2006.01)

**A61B 3/14** (2006.01)

**A42B 3/30** (2006.01)

**(52) U.S. Cl.**

CPC ..... **A61B 3/028** (2013.01); **A61B 3/112** (2013.01); **A61B 3/113** (2013.01); **A61B 3/145** (2013.01); **A61B 5/11** (2013.01); **A61B 5/1121** (2013.01); **A61B 5/163** (2017.08); **A61B 5/4863** (2013.01); **A61B 5/6803** (2013.01); **A63B 71/10** (2013.01); **A42B 3/30** (2013.01); **A61B 5/4076** (2013.01); **A61B 2560/0223** (2013.01); **A61B 2562/028** (2013.01); **A61B 2562/0219** (2013.01); **A61B 2562/0223** (2013.01)

**(58) Field of Classification Search**

USPC ... 351/159.01, 200, 203, 205, 206, 210, 246  
See application file for complete search history.

**(56) References Cited****U.S. PATENT DOCUMENTS**

5,180,907 A 1/1993 Udden et al.  
5,204,998 A 4/1993 Liu  
5,550,601 A 8/1996 Donaldson  
5,553,330 A \* 9/1996 Carveth ..... A42B 3/0473  
2/414

5,555,895 A 9/1996 Ulmer et al.  
5,621,922 A 4/1997 Rush, III  
5,838,420 A 11/1998 MacGregor Donaldson  
5,919,149 A 7/1999 Allum  
5,942,954 A 8/1999 Galiana et al.  
5,953,102 A 9/1999 Berry  
5,978,972 A 11/1999 Stewart et al.  
6,301,718 B1 10/2001 Rigal  
6,369,952 B1 \* 4/2002 Rallison ..... G02B 27/017  
359/630

6,796,947 B2 9/2004 Watt et al.  
6,826,509 B2 11/2004 Crisco et al.  
6,931,671 B2 8/2005 Skiba  
7,276,458 B2 10/2007 Wen  
7,380,938 B2 6/2008 Chmielewski et al.  
7,386,401 B2 6/2008 Vock et al.  
7,401,920 B1 7/2008 Kranz et al.  
7,448,751 B2 11/2008 Kiderman et al.  
7,500,752 B2 3/2009 Nashner  
7,509,835 B2 3/2009 Beck

7,526,389 B2 4/2009 Greenwald et al.  
7,651,224 B2 1/2010 Wood et al.  
7,682,024 B2 3/2010 Plant et al.  
7,727,162 B2 6/2010 Peterka  
7,731,360 B2 6/2010 MacDougall et al.  
7,753,523 B2 7/2010 Kiderman et al.  
7,849,524 B1 12/2010 Williamson et al.  
7,866,818 B2 1/2011 Schroeder et al.  
7,931,370 B2 4/2011 Bartomeu  
7,988,287 B1 8/2011 Butler et al.  
8,232,881 B2 7/2012 Hertz  
8,253,814 B2 8/2012 Zhang et al.  
8,285,416 B2 10/2012 Cho et al.  
8,510,166 B2 8/2013 Neven  
8,529,463 B2 9/2013 Della Santina et al.  
8,578,520 B2 11/2013 Haldin  
8,696,126 B2 4/2014 Yoo et al.  
8,764,193 B2 7/2014 Kiderman et al.  
9,370,302 B2 6/2016 Krueger  
9,788,714 B2 10/2017 Krueger  
2002/0118339 A1 8/2002 Lowe  
2003/0231293 A1 \* 12/2003 Blum ..... G02B 27/017  
356/5.01  
2006/0059606 A1 3/2006 Ferrara  
2006/0098087 A1 5/2006 Brandt et al.  
2006/0206175 A1 9/2006 Tournier et al.  
2006/0270945 A1 11/2006 Ghajar  
2008/0022441 A1 1/2008 Oranchak et al.  
2009/0021695 A1 1/2009 Scarpino  
2010/0036289 A1 2/2010 White et al.  
2010/0092049 A1 4/2010 Schroeder et al.  
2010/0101005 A1 4/2010 Crompton et al.  
2010/0198104 A1 8/2010 Schubert et al.  
2010/0280372 A1 11/2010 Poolman et al.  
2011/0176106 A1 7/2011 Lewkowski  
2011/0209272 A1 \* 9/2011 Drake ..... A42B 3/069  
2/411  
2012/0133892 A1 5/2012 Furman et al.  
2012/0143526 A1 6/2012 Benzel et al.  
2012/0198604 A1 8/2012 Weber et al.  
2012/0204327 A1 8/2012 Faden et al.  
2012/0297526 A1 11/2012 Leon  
2013/0232668 A1 9/2013 Suddaby  
2013/0278899 A1 10/2013 Waldorf et al.  
2014/0111771 A1 4/2014 Liu  
2014/0192326 A1 7/2014 Kiderman et al.  
2014/0327880 A1 11/2014 Kiderman et al.  
2015/0038803 A1 2/2015 Uhlig et al.  
2015/0212576 A1 7/2015 Ambrus et al.  
2015/0223683 A1 8/2015 Davidovics et al.  
2015/0243099 A1 8/2015 Schowengerdt  
2015/0245766 A1 9/2015 Rennaker et al.  
2015/0335239 A1 11/2015 Macfougall  
2016/0033750 A1 2/2016 Nunnink et al.  
2016/0062459 A1 3/2016 Publicover et al.  
2016/0081546 A1 3/2016 MacDougall et al.  
2016/0085302 A1 3/2016 Publicover et al.  
2016/0106315 A1 4/2016 Kempinski  
2016/0110920 A1 4/2016 Schowengerdt  
2016/0132726 A1 5/2016 Kempinski et al.  
2016/0242642 A1 8/2016 Migliaccio et al.  
2017/0336641 A1 \* 11/2017 von und zu Liechtenstein .....  
G02B 13/14  
2018/0052276 A1 \* 2/2018 Klienman ..... G02B 6/0035

**OTHER PUBLICATIONS**

Foster, "New Football Helmet Could Save the Sport", published by Popular Science, <https://www.popsci.com/science/article/2013-08/helmet-wars-and-new-helmet-could-protect-us-all>, Dec. 18, 2012, all pages.

\* cited by examiner

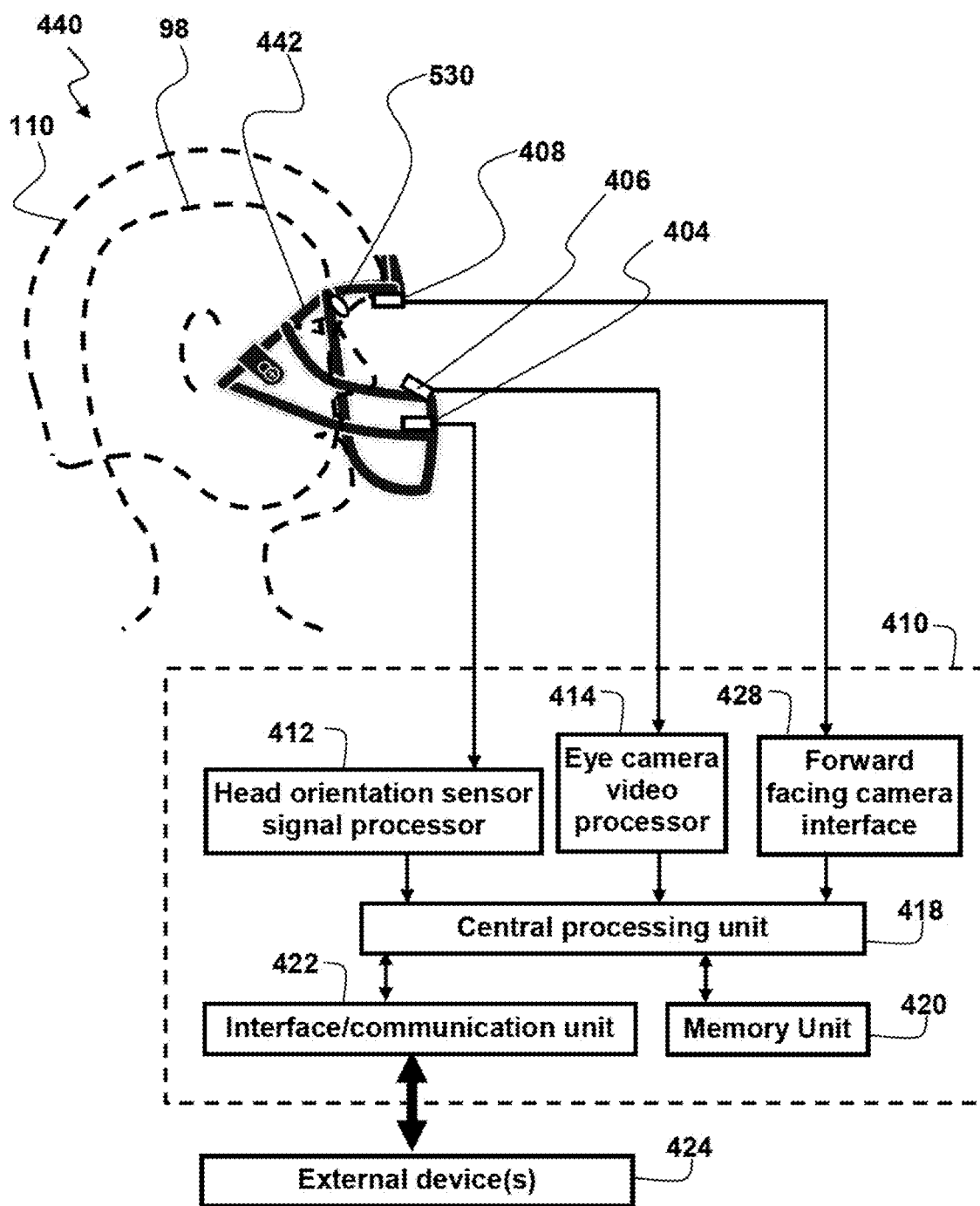


FIG. 1

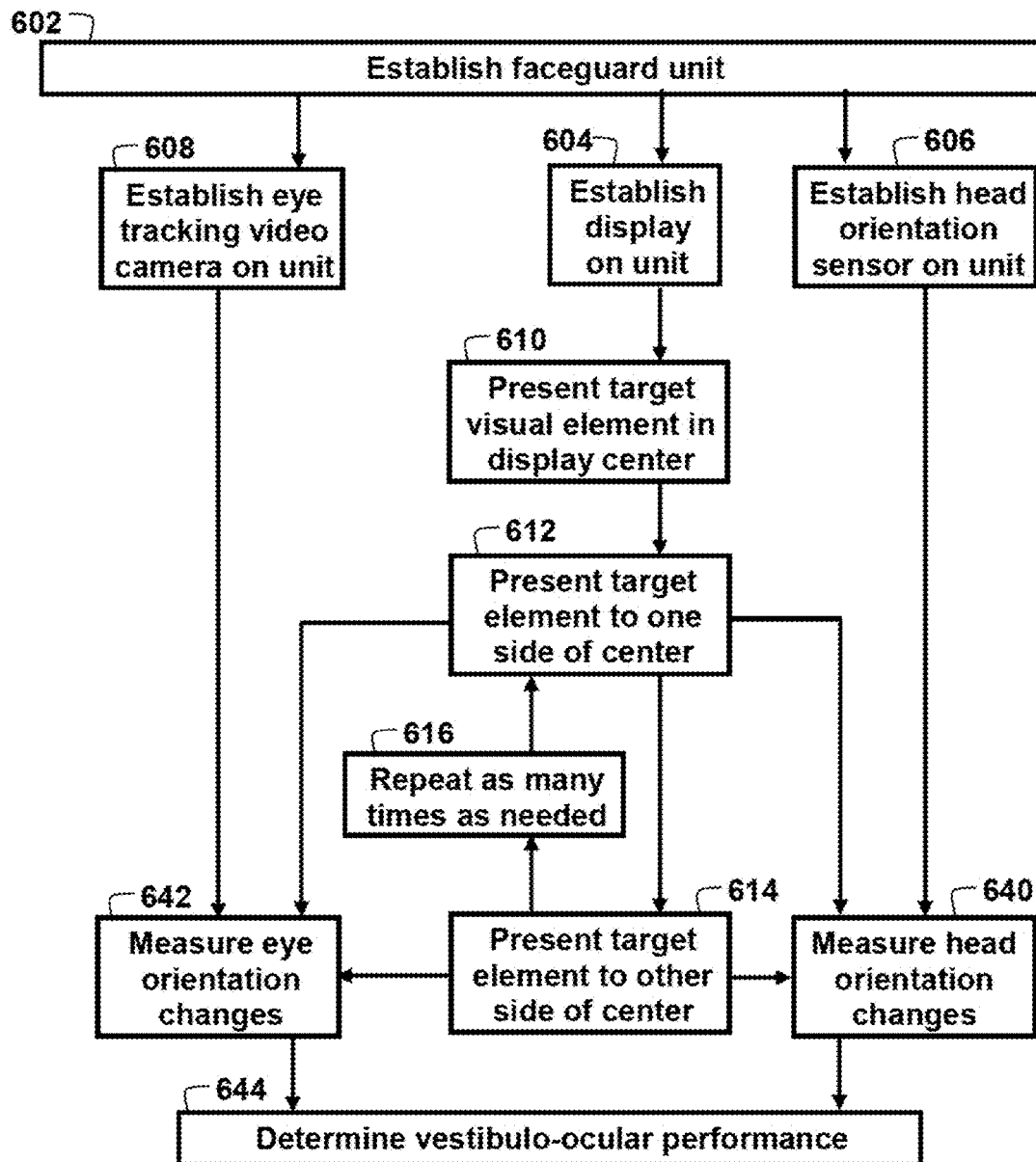


FIG. 2

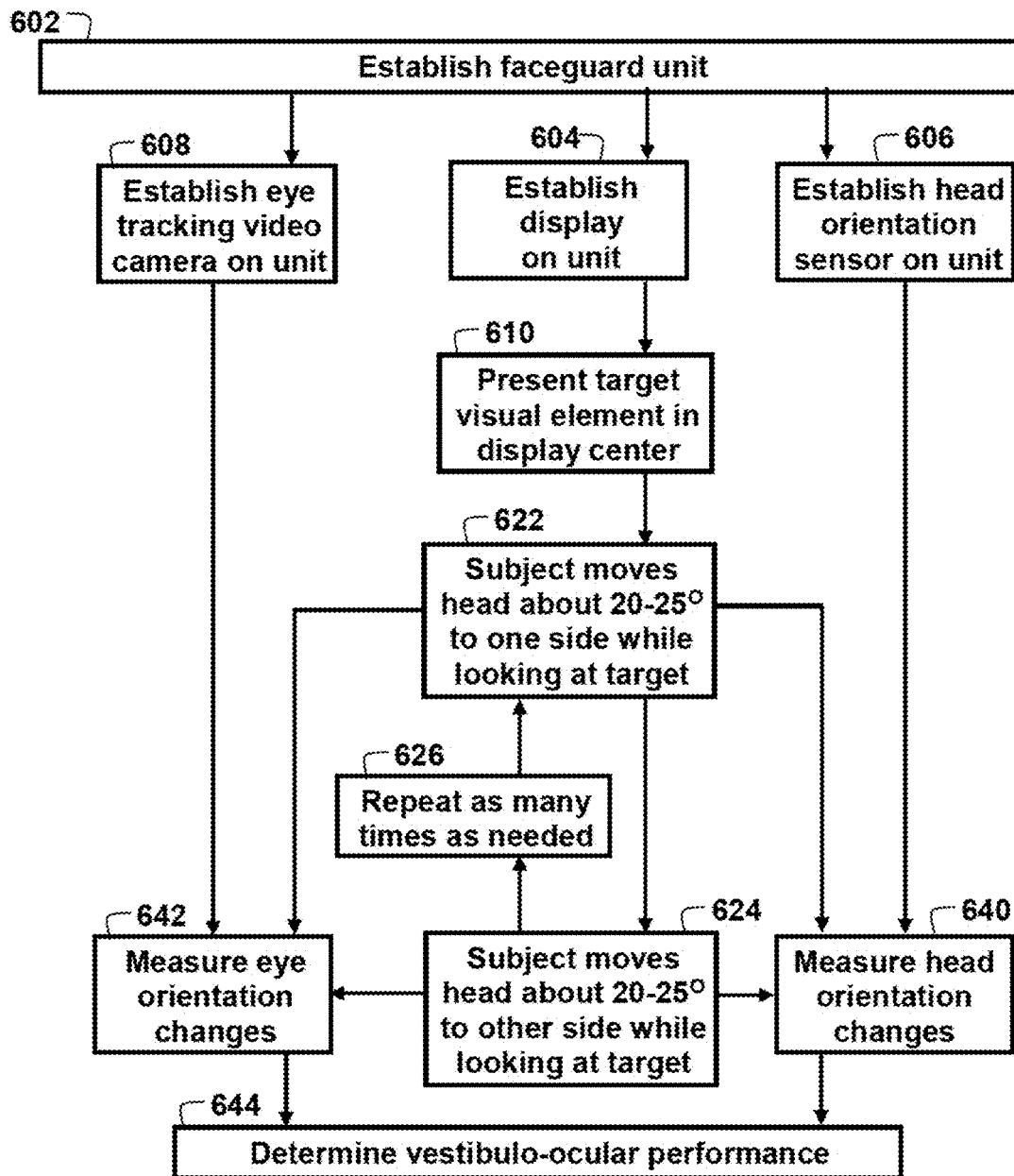


FIG. 3

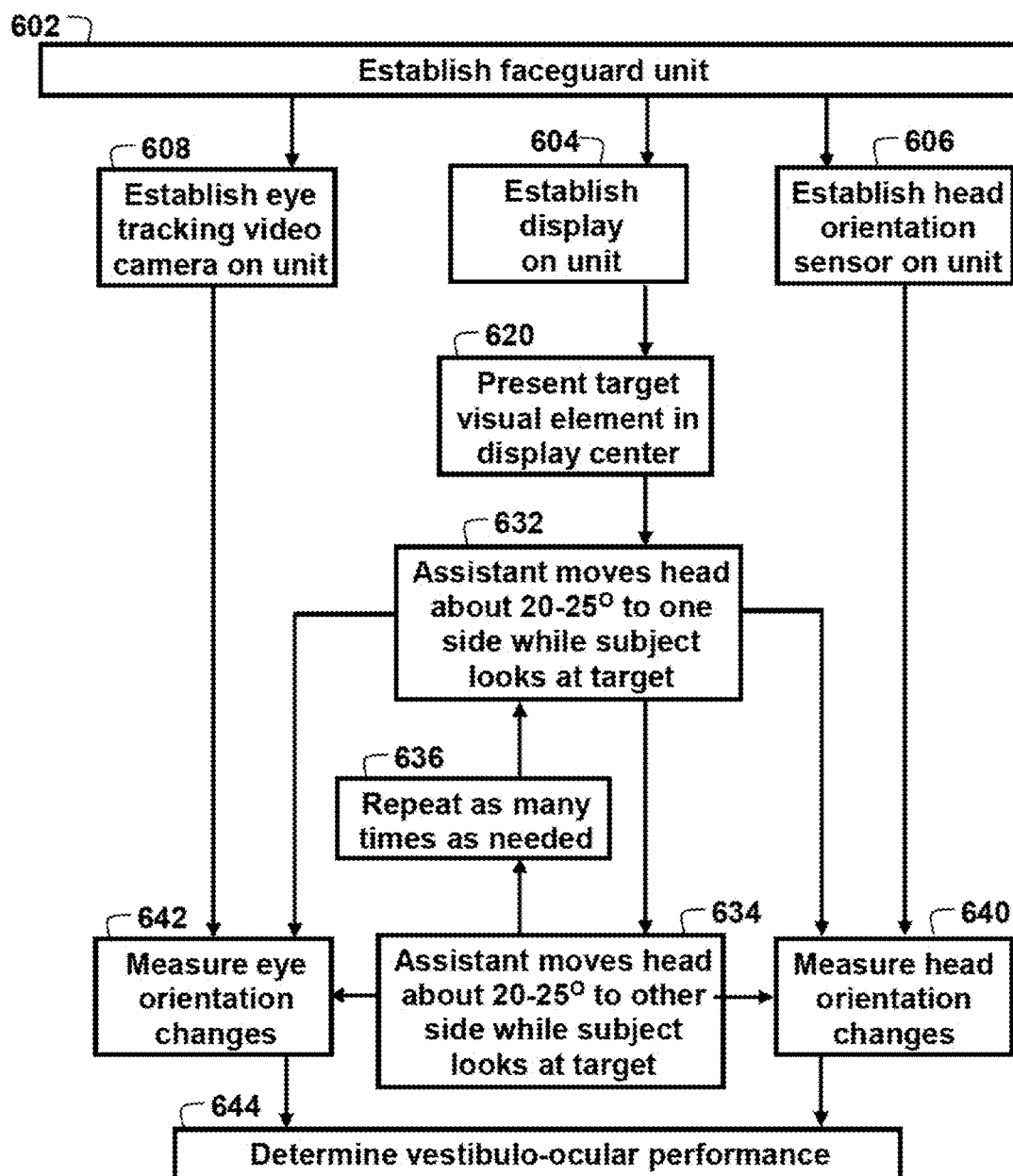


FIG. 4

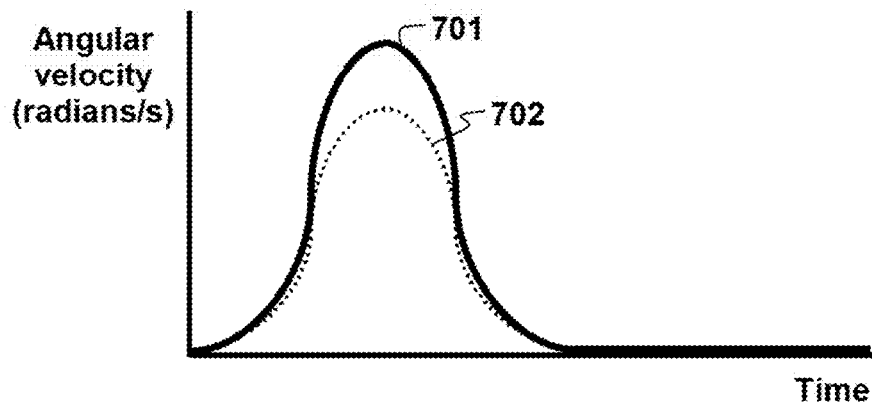


FIG. 5A

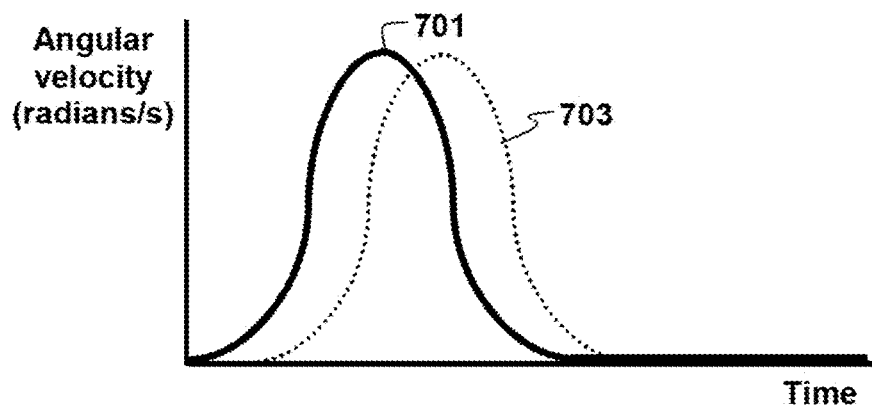


FIG. 5B

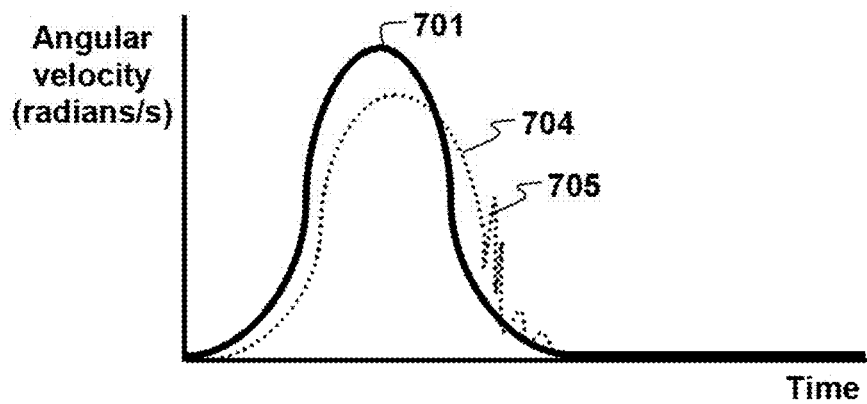


FIG. 5C

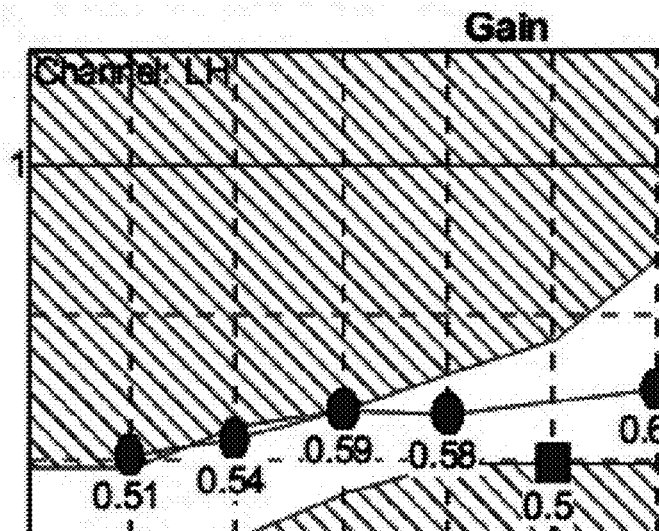


FIG. 6A

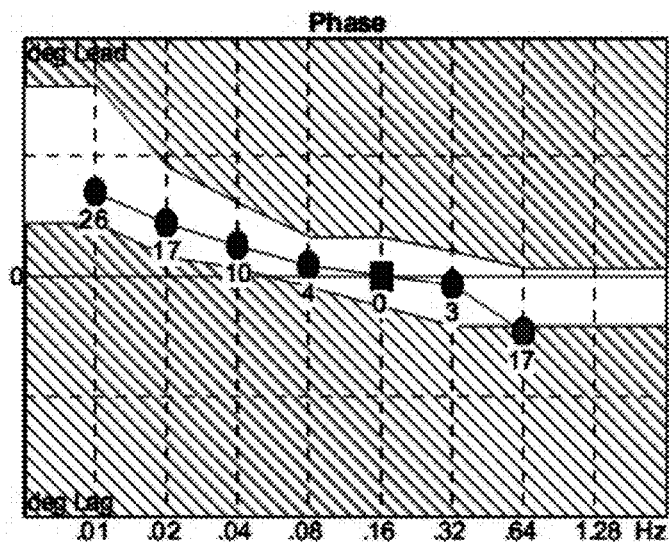


FIG. 6B

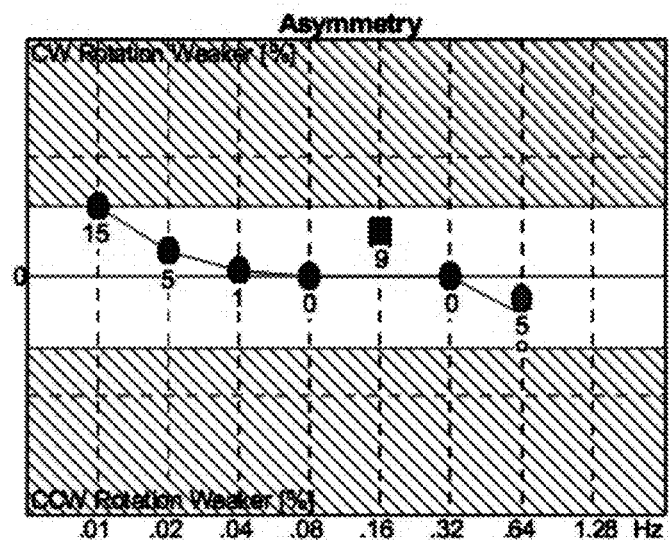


FIG. 6C





FIG. 7A

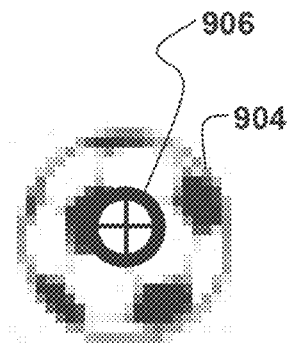


FIG. 7B

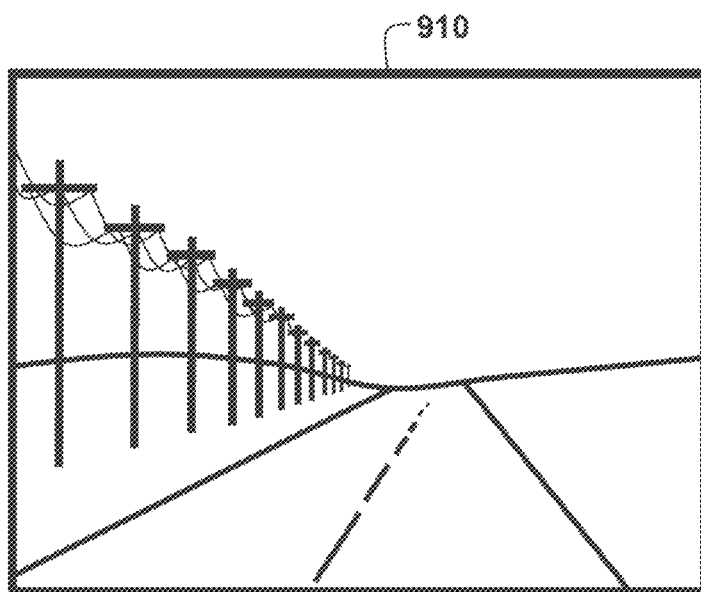


FIG. 8

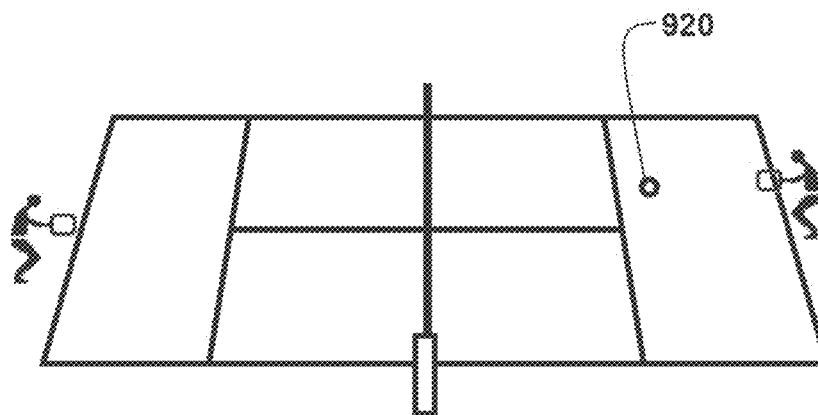


FIG. 9

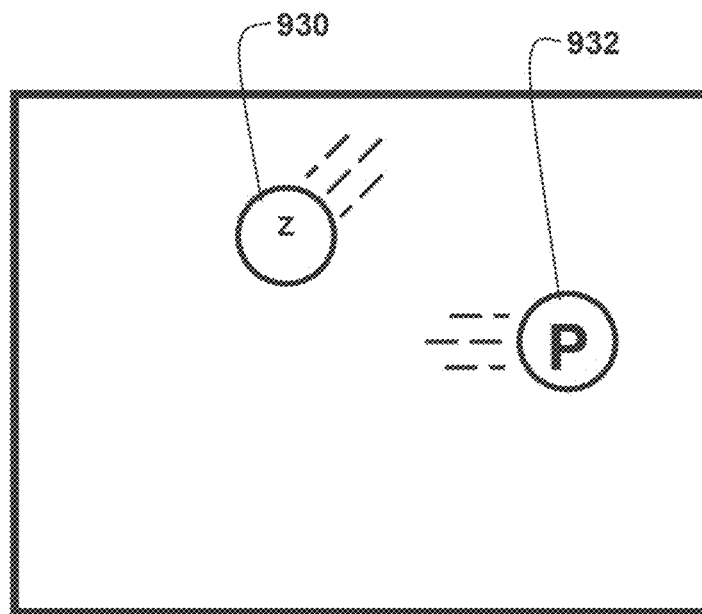


FIG. 10

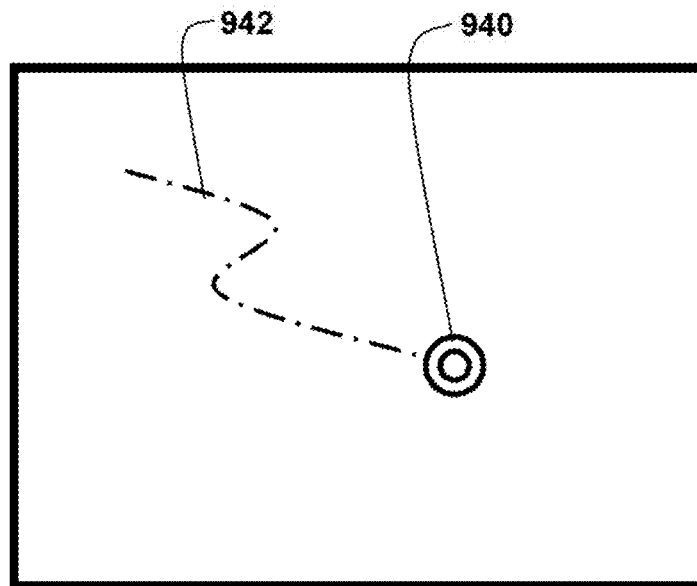


FIG. 11

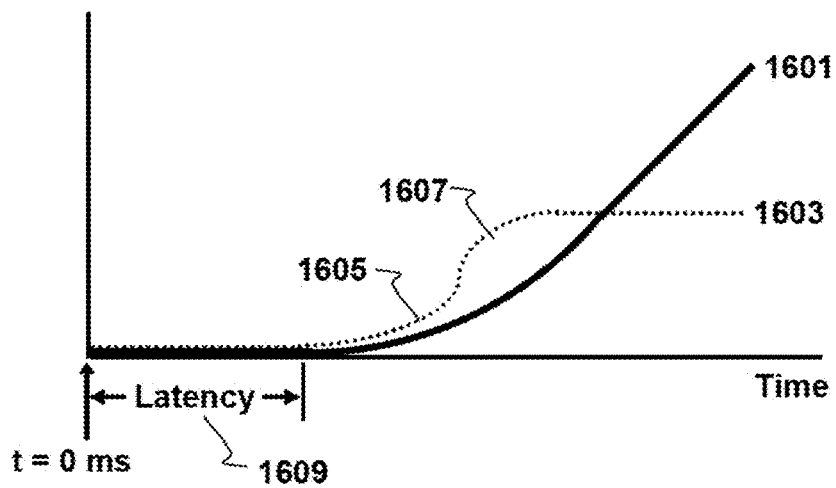


FIG. 12

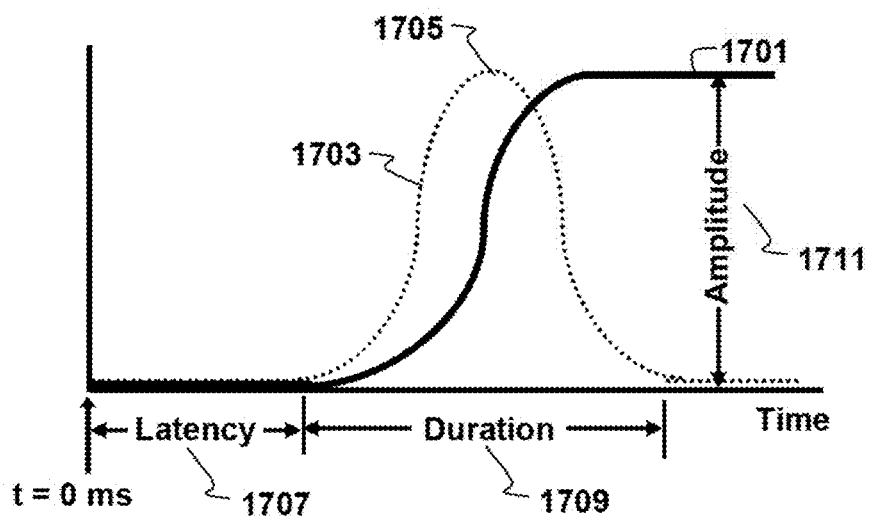


FIG. 13A

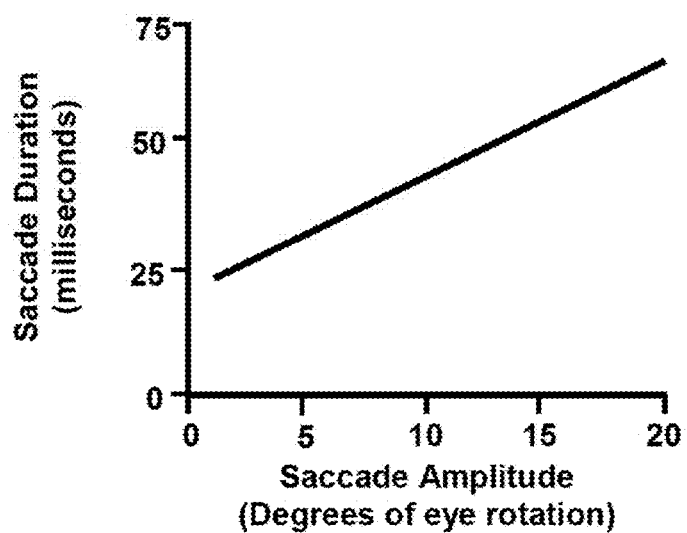


FIG. 13B

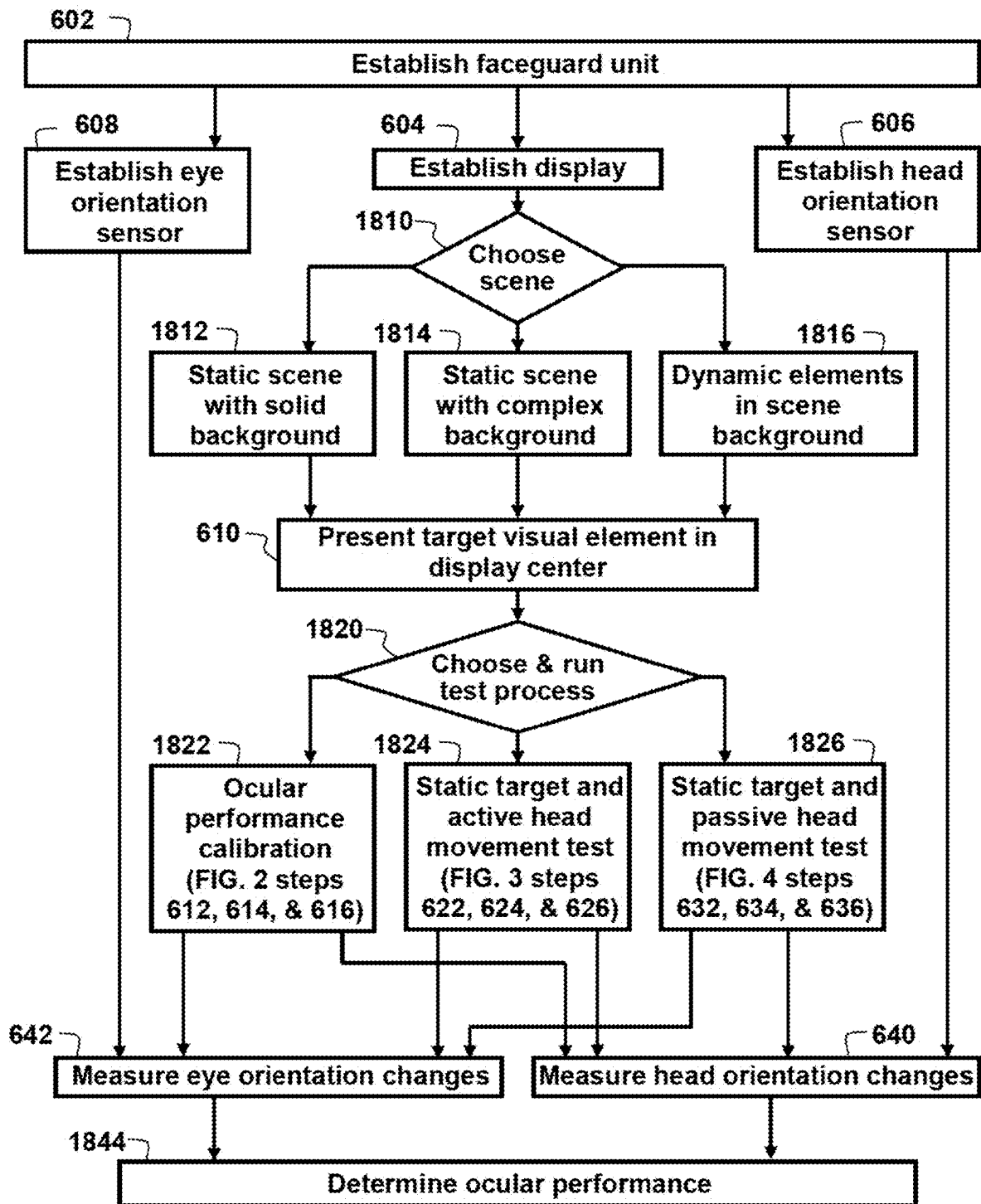


FIG. 14

# OCULAR-PERFORMANCE-BASED HEAD IMPACT MEASUREMENT USING A FACEGUARD

## CROSS REFERENCE TO RELATED APPLICATIONS

This application is a Continuation-In-Part of U.S. patent application Ser. No. 16/264,242, filed 31 Jan. 2019, which application is a Continuation-In-Part of U.S. patent application Ser. No. 15/713,418, filed 22 Sep. 2017, which application is a Continuation-In-Part of U.S. patent application Ser. No. 15/162,300, filed 23 May 2016, now U.S. Pat. No. 9,788,714, issued 17 Oct. 2017, which application is a Continuation-In-Part of U.S. patent application Ser. No. 14/326,335, filed 8 Jul. 2014, now U.S. Pat. No. 9,370,302, issued 21 Jun. 2016. U.S. patent application Ser. No. 14/264,242 is also a Continuation-In-Part of U.S. patent application Ser. No. 13/749,873, filed 25 Jan. 2013. The entire disclosures of all of the aforementioned patents and applications are incorporated by reference herein for all purposes.

## FIELD OF INVENTION

Embodiments of the invention(s) disclosed herein relate to systems and methods that use human ocular performance measurement in combination with a face guard. Human ocular performance can be measured using vestibulo-ocular reflex, ocular saccades, pupillometry, visual pursuit tracking, vergence, eye-lid closure, focused position of the eyes, dynamic visual acuity, kinetic visual acuity, virtual retinal stability, retinal image stability, foveal fixation stability and nystagmus.

## BACKGROUND

Concussions are a type of traumatic brain injury (TBI) that is sometimes called a mild traumatic brain injury or a moderate traumatic brain injury and abbreviated as an MTBI. Concussions and the resultant chronic traumatic encephalopathy (CTE) have reached epidemic proportions in the US. The CDC estimates that as many as 3.8 million sports-related concussions occur in the U.S. each year including professional athletes, amateurs of all levels, and children. There are over 250,000 emergency room visits of young people annually for head injuries from sports and recreation activities. Over 50 million Americans participate in team sports and all of them are at some level of risk of experiencing a concussion. Concussions from multiple head blows and the resulting CTE have caused several professional football players to commit suicides. The US National Football League (NFL) and the scientific community recognize that concussions are a major concern for both players and the sport itself. Concussions also occur in college and high school football, in other sports such as ice hockey and cycling, and in military operations.

Concussions happen in the brain's white matter when forces transmitted from a big blow strain nerve cells and their connections, the axons, resulting in changes to the brain such as pruning, synaptic pruning, and myelination. Linear blunt trauma can happen when falling to the ground and hitting the back of the head. The falling motion propels the brain in a straight line downward. Rotational blunt trauma can occur when a player is spun, rolled or turned with the head hitting the object. The base of the skull is rough with many internal protuberances. These ridges can cause trauma to the temporal lobes during rapid deceleration.

There is a predicted intracranial pressure wave after a concussive blow with the positive pressure (coup) to negative pressure (contre-coup) occurring across the brain. A high shear stress occurs in the central core of the brain (e.g., brainstem). Axonal injury occurs with degeneration/disintegration in discrete regions of the brain. Axon retraction and areas of hemorrhage are noted.

Diffuse axonal injury (DAI) occurs from rotational forces. The injury to tissue is greatest in areas where the density difference is greatest. For this reason, almost  $\frac{2}{3}$  of DAI lesions occur at the gray-white matter junction. Location of injury depends on plane of rotation. The magnitude of injury depends on the distance from the center of rotation, arc of rotation, duration and intensity of the force. There are widespread metabolic changes (reduced N-Acetylaspartate (NAA)/Creatine (Cr), increased Choline (Cho)/Cr, and reduced NAA/Cho ratios). Early and late clinical symptoms, including impairments of memory and attention, headache, and alteration of mental status, are the result of neuronal dysfunction. The mechanical insult initiates a complex cascade of metabolic events. Starting from neurotoxicity, energetic metabolism disturbance caused by the initial mitochondrial dysfunction seems to be the main biochemical explanation for most post-concussive signs and symptoms. Furthermore, concussed cells enter a peculiar state of vulnerability, and if a second concussion is sustained while they are in this state, they may be irreversibly damaged by the occurrence of swelling. This condition of concussion-induced brain vulnerability is the basic pathophysiology of the second impact syndrome.

Prior Art Non-Ocular Concussion Assessment Methods and Systems

Current methods concussion assessment methods and systems are inadequate. The techniques used include: (a) questioning the athlete or person about the incident; (b) a sideline test with brief neurologic exam and follow up with a clinician; and (c) transferring the patient to medical facility to perform an emergency CT or MRI scan of the head.

Following a witnessed or reported traumatic force to the head, athletes are typically evaluated on the sideline or locker room with interrogation regarding relevant symptoms. More common symptoms include headache, dizziness, difficulty with concentration, confusion and visual disturbance or photosensitivity. Many also experience nausea, drowsiness, amnesia, irritability or feeling dazed. However, none of these symptoms either alone or in combination, are specific for concussion, and frequently concussions can be undetectable by symptom screening alone. Such a sideline evaluation is suboptimal. More specific testing is not readily available for most individuals and a delayed evaluation is the norm. For those seen later by clinicians, the neurologic exam is often normal. While CT scans are effective in detecting acute brain trauma such as hematoma or edema, they are limited in detecting concussions and other concussion-related symptoms because concussions affect brain function rather than structure. Thus, functional tools, such as functional MRIs (fMRIs) need to be used.

A fMRI is a concussion diagnostic tool used by medical professionals to measure the difference between the magnetic states of oxygen-rich and oxygen-poor blood through the use of blood-oxygen-level-dependent (BOLD) contrast techniques. These scans may not be readily available at most hospitals and the use is limited.

Further, specific clinical laboratory tests with professional specialists to interpret the data are not immediately available or even accessible to some players. There are presently some tests available for concussion assessment. Both balance and

gait can also be affected in the setting of concussion, and numerous sideline assessments are intended to evaluate these sensorimotor functions.

The Standardized Assessment of Concussion (SAC) is a brief cognitive test that specifically evaluates orientation, concentration, and memory. While the test is easy to administer as a sideline screening tool, it suffers from inadequate sensitivity to justify its use as a stand-alone test. Furthermore, as with symptom checklists, determined athletes can manipulate the outcome, either by memorizing certain portions of the evaluation or by intentionally underperforming in the preseason baseline assessment to which subsequent tests will be compared. It lacks validity and reliability of the data obtained.

The Balance Error Scoring System (BESS) is a static balance assessment that requires an individual to perform 3 stances on 2 different surfaces for a total of 6 trials. Each trial is 20 seconds in duration, and the score is equal to the cumulative number of balance errors. While balance itself is a relatively objective measure of sensorimotor function, significant variability in scoring is reflected by poor inter-rater and even intrarater reliability. An individual's score on the BESS can also fluctuate during the course of an athletic season independent of concussion status, and the BESS score can be further confounded by lower-extremity injuries and/or fatigue.

The timed tandem gait test (TGT) is a dynamic assessment of sensorimotor function in which a participant is timed while walking heel-to-toe along a 38-mm-wide piece of tape that is 3 m in length. Each assessment consists of 4 identical trials, and the best time among the 4 trials is recorded as the official score. Timed TGT performance can be affected by exercise and lacks specificity for concussions and reliability.

The Sport Concussion Assessment Tool, 3rd Edition (SCAT-3) consists of a carefully selected series of tests, including a focused physical exam, a 22-symptom checklist, the GCS, and cognitive and sensorimotor assessments. The SCAT-3 benefits from its ability to assess a range of neurological functions, including orientation, cognition, memory, balance, and gait. However, the duration of the test battery is approximately 15-20 minutes, which is not optimal in the setting of time-limited athletic competition. Furthermore, the SCAT-3 is designed to be administered by medical practitioners, which limits its utility in youth and high-school sports, in which medical professionals are not necessarily available for sideline concussion screening. Similar to many of the other concussion screening tools, the SCAT-3 also requires baseline testing for comparison, which carries additional logistical challenges. Finally, SCAT-3 is not 100% sensitive for identifying athletes with concussion and is more of a complementary test rather than the primary stand-alone tool for concussion detection. The checklist's sensitivity has been shown to have a significant degree of variability. A revised SCAT-5 incorporates cognitive and balance testing with 6 pages of forms to complete and takes more than 10 minutes to complete. This test also cannot be used as stand-alone method to diagnose concussion.

The King-Devick Test (KDT) is a rapid mobile application of visual performance measure. It takes about two minutes to complete and compares pre-test results. This is a rapid number-naming task requiring the athlete to read aloud 3 cards of irregularly spaced single-digit numbers as quickly as possible. Scoring is based on both speed and accuracy. This test does not measure eye movements such as vergence or other oculomotor parameters, such as VOR or visual pursuit. This test also cannot measure fine ocular movements

such as saccades. At its core, the KDT is an assessment of visual function, but it also assesses the integrity of attention. The KDT requires a baseline assessment for comparison. In the setting of sideline concussion screening, the KDT is ideal in that it takes less than 1-2 minutes to complete but is 80%-86% sensitive for detecting concussion and thus should not be used as a stand-alone test and has testing reliability variability due to large learning effect.

Brain Scope uses commercial smartphone hardware, using an Android operating system and a custom sensor to record and analyze a patient's electroencephalogram (EEG) after head injury. The test is based on a technique called quantitative electroencephalography, or QEEG. QEEG relies on computerized analysis of a set of changes that are distinctive of a traumatic brain injury. It requires a baseline measurement because without a baseline measurement it can't be known for sure whether someone's EEG signal is in fact abnormal. The difference could be other things besides concussion, like a medication, a previous head injury, or something else entirely. It also requires trained personnel for interpretation and is not completely portable. It has not been well accepted, is more difficult to interpret and is more time consuming.

A blood test, called the Brain Trauma Indicator (BTI), helps determine whether a CT scan is needed in people with suspected concussion. The test measures two brain-specific proteins, ubiquitin C-terminal hydrolase (UCH-L1) and glial fibrillary acidic protein (GFAP), that are rapidly released by the brain into the blood within 12 hours of serious brain injury. Test results can be available within three to four hours (or approximately 16 hours after the serious injury). Low blood levels of these proteins indicate that, if the person has damage, it is likely too small to be seen on a CT scan. Obviously, this cannot be done acutely, but has to be done in a medical facility, which may not be readily available for remote injuries. Failure to provide information immediately, may also fail to prevent second events, as the athlete or military personnel may have returned to play or previous activities.

ImPACT (Immediate Post-Concussion Assessment and Cognitive Testing) is a neurocognitive assessment administered online in a controlled environment. ImPACT has two components: baseline testing and post-injury testing, which are used in conjunction to determine if a patient can safely return to an activity. ImPACT testing is a 25 to 30-minute online test. ImPACT is designed for ages 12-59. Only licensed healthcare providers can administer and interpret post-injury test results and this is not available in most cities. It therefore cannot test the individual acutely and reliability is poor.

Helmet Instrumented Telemetry (HITS), that measures the magnitude and direction of an impact to a helmet is now used in some helmets, but do not appear to be reliable predictor of concussion or concussion severity.

Prior Art Ocular Concussion Assessment Methods

The ability to track objects in the environment is an important feature for humans to interact with their surroundings. In particular, the ability to recognize the presence of an environmental hazard is directly linked to our ability to fix our gaze on a visualized target of interest, recognize the threat, and implement a plan of action. Therefore, the central nervous system (CNS) is imposed with a series of tasks and time constraints that require a harmonic integration of several neural centers located in multiple regions and linked through an efficient transmission of information. There are central nervous system (CNS) impairments in individuals with mTBIs long after the last traumatic episode. Even a

mild TBI (mTBI), also known as a concussion, will result in oculomotor abnormalities and can cause visual problems, including, but not limited to dysfunction with visual fixation on a visual element or visual object of interest and vergence. In addition to glare and photophobia, individuals commonly report problems including blurred vision; squinting; double vision/diplopia; difficulty reading; watching television; using computers; loss of visual acuity; color discrimination; brightness detection; contrast sensitivity; visual field defects; visuospatial attention deficits; slower response to visual cues; visual midline shift syndrome, affecting balance and posture; impaired accommodation and convergence; nystagmus; visual pursuit disorders; deficits in the saccadic system; extraocular motility problems resulting in strabismus; reduction in stereopsis; reading problems, including losing one's place, skipping lines, and slow reading speed.

During periods of fixation, our eyes are never perfectly stable but display small involuntary physiological eye movements. These take the form of disconjugate slow drifts ( $1\text{'}/\sim 0.05^\circ$ , small conjugate microsaccades ( $5\text{'}/\sim 0.17^\circ$ , 1-2 per second) and disconjugate tremors ( $15\text{'}/0.004^\circ$ ; 30-80 Hz) superimposed on the slow drifts. A further class of involuntary physiological eye movement is called saccadic intrusions (SI). They are conjugate, horizontal saccadic movements which tend to be 3-4 times larger than the physiological microsaccades and take the form of an initial fast eye movement away from the desired eye position, followed, after a variable duration, by either a return saccade or a drift. Saccadic intrusions are involuntary, conjugate movements which take the form of an initial fast movement away from the desired eye position and followed after a short duration, by either a return secondary saccade or a drift.

When analyzing eye movement accuracy, abnormal saccadic eye movements while performing smooth pursuit, diminished accuracy of primary saccadic eye movement, and a widespread slower reaction to visual stimuli can all be seen. More commonly the most relevant saccadic parameters measured are peak velocity, latency, and accuracy. Visually guided saccadic tasks showed longer latencies and reduced accuracy irrespective of the severity of TBI. There is also increased eye position error, variability, widespread delays in reaction times and significant adaptations to normal patterns of eye tracking movements. Saccadic intrusions (irregular episodic occurrences of fast eye movements) are classified according to whether or not the intrusive saccades are separated by a brief interval in which the eyes are stationary. Although saccadic reaction times appear delayed in mild TBI, they can be seen to resume to normal levels one to three weeks after injury.

Saccadic intrusions, and saccadic oscillations are fixation instabilities which impair vision, and usually are involuntary and rhythmic. Saccadic oscillations are caused by abnormalities in the saccadic eye movement system. Abnormal saccades move the eyes away from the intended direction of gaze, and corrective saccades carry the eyes back. In saccadic intrusions, such as square-wave jerks and macrosquare-wave jerks, brief pauses occur, or intersaccadic intervals, between the opposing saccades. In ocular flutter and opsoclonus, no intersaccadic intervals occur. Three of four types of SI monophasic square wave intrusions (MSWI), biphasic square wave intrusions (BSWI) and double saccadic pulses (DSP) have been noted to be exclusively saccadic, while the fourth type, the single saccadic pulses (SSP), exhibits a slow secondary component. Following mTBI the impaired ability to generate predictive (or anticipatory saccades) can also be seen. The majority of

individuals have vergence system abnormalities (convergence insufficiency), which typically results in oculomotor symptoms related to reading.

Thus, the measurement of ocular performance can greatly enhance the ability to determine whether a traumatic brain injury has occurred. However, the currently available ocular performance technology is not optimized for concussion evaluation.

The EYE-SYNC System quantifies the predictive timing of dynamic visuo-motor synchronization (DVS) between gaze and target during predictive circular visual tracking. Eye-Sync utilizes a head worn goggles which measures smooth pursuit, while the head remains motionless. The test takes 1 minute, while the user visualizes a dot moving in a circle. Eye trackers measures spatial and timing variability and has 80% test reliability for detecting concussions. However, visual pursuit testing cannot test the vestibular system, which is also intimately related to concussions. It therefore lacks more sophisticated testing, such as seen with vestibular ocular reflex testing. It is also not a stand-alone device, but requires an accessory computer attached.

The Eye-Guide Focus system features an eye-tracking headset and a portable chin mount. Its software runs on an iPad facing the user and the user has to follow a small white circle moving across the screen with their eyes in order to set the baseline of how their eyes normally function. This system lacks complete portability and uses similar technology to Eye-Sync.

Neuro Kinetics I-PAS System is a battery of tests using goggles and measures ocular motor, eye motor and reaction times to test whether certain neural pathways have been altered or are behaving abnormally. I-Pass test subjects wear a pair of goggles linked to a laptop and allows the tester to measure infinitesimally small changes in the subject's eye muscles while the test is taking place. The data generated from the test, coupled with the clinical exam, allows the doctor to make a final diagnosis. (a non-portable device). This testing is performed in a clinical environment, lacks portability and multiple pieces of equipment, with medical personnel required to interpret the data obtained.

Oculogica's EyeBOX uses ocular motility to detect cranial nerve function and provides a BOX Score indicative of the presence and severity of brain injury. The EyeBOX requires no pre-test calibration which can omit critical information if the subject being evaluated has indeed suffered a TBI or concussion. This test requires the user to rest their chin and forehead comfortably on the device and watch a video for less than four minutes. This requires laboratory testing and also lacks portability.

The evidence shows that more sophisticated testing is needed which is highly specific for concussion detection, portable and can be used on the field of play, in a military operative environment or in any other environment where a concussion is likely to occur. Specifically, oculomotor parameter measurement as described with this invention using ocular and head sensing elements and transducers have shown high sensitivity and accuracy in identifying athletes who experienced a sport-related concussion. When comparing all these tests, the VOR has the highest percentage for identifying the individual with concussions.

#### Concluding Summary

It is desired to provide a head impact measurement and mitigation system and/or method that is fundamentally superior to the prior art in determining whether a concussion has



occurred and in reducing the chance of one or more concussions that can lead to chronic traumatic encephalopathy.

#### BRIEF DESCRIPTION OF THE DRAWINGS

The present invention will be better understood on reading the following detailed description of non-limiting embodiments thereof, and on examining the accompanying drawings, in which:

FIG. 1 shows a face guard that comprises an ocular performance measuring system;

FIG. 2 shows an ocular performance calibration test method;

FIG. 3 shows a static active ocular performance test method;

FIG. 4 shows a static passive ocular performance test method;

FIG. 5A shows a vestibulo-ocular gain measurement;

FIG. 5B shows a vestibulo-ocular phase measurement;

FIG. 5C shows ocular saccades;

FIG. 6A illustrates an example of the left eye gain of a healthy person's vestibulo-ocular response to motion between 0.1 Hertz and 1.28 Hertz;

FIG. 6B illustrates an example of the phase lead and lag for a healthy person's vestibulo-ocular response to motion between 0.1 Hertz and 1.28 Hertz;

FIG. 6C illustrates an example of the asymmetry readings between counterclockwise and clockwise horizontal rotation of a healthy person's vestibulo-ocular response to motion between 0.1 Hertz and 1.28 Hertz;

FIG. 7A shows an unaltered visual element;

FIG. 7B shows the visual element of FIG. 11A that has been altered by defocusing the visual element and superimposing a target;

FIG. 8 shows a scene that can be used for optokinetic testing;

FIG. 9 shows a scene that can be used for testing eye-tracking performance;

FIG. 10 shows a scene that can be used for dynamic visual acuity testing;

FIG. 11 shows a scene that can be used for scan path tracking;

FIG. 12 shows the relationship between target movement, eye position, eye velocity, and eye acceleration for smooth pursuit;

FIG. 13A shows the relationship between target movement, eye position, and eye velocity for a saccade;

FIG. 13B shows the typical relationship between saccade amplitude and saccade duration; and

FIG. 14 shows a generalized method for ocular testing using a faceguard unit.

It should be understood that the drawings are not necessarily to scale. In certain instances, details that are not necessary for an understanding of the invention or that render other details difficult to perceive may have been omitted. It should be understood that the invention is not necessarily limited to the particular embodiments illustrated herein.

#### DETAILED DESCRIPTION

The ensuing description provides preferred exemplary embodiment(s) only, and is not intended to limit the scope, applicability or configuration of the disclosure. Rather, the ensuing description of the preferred exemplary embodiment(s) will provide those skilled in the art with an enabling description for implementing a preferred exemplary

embodiment. It should be understood that various changes could be made in the function and arrangement of elements without departing from the spirit and scope as set forth in the appended claims.

Specific details are given in the following description to provide a thorough understanding of the embodiments. However, it will be understood by one of ordinary skill in the art that the embodiments may be practiced without these specific details.

In one embodiment, the present invention comprises head tracking and ocular-based sensors integrated into a face guard. The ocular-based sensors comprise at least one camera that views at least one eye of the faceguard wearer. The information from this eye camera can be combined with sensors that measure head rotation to determine whether human performance has been degraded by a blow to the head. The vestibular ocular reflex, after an impact, is an example of one ocular performance measurement that could be made using this system to determine if the wearer has suffered a concussion or mild traumatic brain injury. Other ocular performance measurements can include pupillometry, ocular saccades, visual pursuit tracking, nystagmus, vergence, convergence, divergence, eye-lid closure, dynamic visual acuity, kinetic visual acuity, retinal image stability, foveal fixation stability, and focused position of the eyes or visual fixation at any given moment.

#### Definitions

The definitions that follow apply to the terminology used in describing the content and embodiments in this disclosure and the related claims.

A concussion is defined as an immediate and transient loss of consciousness accompanied by a brief period of amnesia after a blow to the head.

The smart sensing process can be defined as the input energy or signal which is detected by the sensing element, where the data is measured, and the transducer and associated circuitry transfers the data as output energy or signal to other sensing elements or devices.

A saccade is a fast movement of an eye, head or other part of the body or of a device. It can also be a fast shift in frequency of an emitted signal or other quick change. Saccades are quick, simultaneous movements of both eyes in the same direction. Humans do not look at a scene in fixed steadiness, the eyes move around, locating interesting parts of the scene and building up a mental, three-dimensional 'map' corresponding to the scene. When scanning the scene in front of you or reading these words right now, your eyes make jerky saccadic movements and your eyes stop several times, moving very quickly between each stop. We cannot consciously control the speed of movement during each saccade; the eyes move as fast as they can. One reason for the saccadic movement of the human eye is that the central part of the retina (known as the fovea) plays a critical role in resolving objects. By moving the eye so that small parts of a scene can be sensed with greater resolution, body resources can be used more efficiently. The saccade that occurs at the end of a head turn with someone who has an abnormal VOR is usually a very clear saccade, and it is referred to as an overt saccade. An overt saccade is indicative of abnormal semicircular canal function on the side to which the head was rotated. For example, an overt saccade after a leftwards head rotation means the left semicircular canal has a deficit. Covert saccades are small corrective saccades that occur during the head movement of a person with abnormal inner ear function. Covert saccades reduce

the need for overt saccades that the end of the head movement and are more difficult to identify than overt saccades. Covert saccades are very fast. This makes them almost impossible to detect by the naked eye, and therefore sensitive eye tracking measurements are typically required to detect covert saccades. There is a rapid deceleration phase as the direction of sight lands on the new target location. Following a very short delay, large saccades are frequently accompanied by at least one smaller corrective saccade to further approach a target location. Corrective saccades can occur even if the target has been made to disappear, further supporting the projected, ballistic nature of saccadic movements. However, corrective saccades are more frequent if the target remains visible.

Saccade accuracy, amplitude, latency and velocity can be measured with oculomotor eye movements, most commonly with saccades, vergence, smooth pursuit, and vestibulo-ocular movements. Saccades can be elicited voluntarily, but occur reflexively whenever the eyes are open, even when fixated on a target. They serve as a mechanism for fixation, rapid eye movement, and the fast phase of optokinetic nystagmus. The rapid eye movements that occur during an important phase of sleep are also saccades. After the onset of a target appearance for a saccade, it takes about 200 milliseconds for eye movement to begin. During this delay, the position of the target with respect to the fovea is computed (that is, how far the eye has to move), and the difference between the initial and intended position, or "motor error" is converted into a motor command that activates the extraocular muscles to move the eyes the correct distance in the appropriate direction. The latency, amplitude, accuracy and velocity of each respective corrective saccade and latency totals and accuracy can be calculated.

Saccade accuracy refers to the eye's ability to quickly move and accurately shift from one target fixation to another. Saccade adaptation is a process for maintaining saccade accuracy based on evaluating the accuracy of past saccades and appropriately correcting the motor commands for subsequent saccades. An adaptive process is required to maintain saccade accuracy because saccades have too short a duration relative to the long delays in the visual pathways to be corrected while in flight.

Saccade amplitude refers to the size of the eye movement response, usually measured in degrees or minutes of arc. The amplitude determines the saccade accuracy. This is sometimes denoted using "gain". It is also described as the angular distance the eye travels during the movement. For amplitudes up to 15 or 20°, the velocity of a saccade linearly depends on the amplitude (the so-called saccadic main sequence). Saccade duration depends on saccade amplitude. In saccades larger than 60 degrees, the peak velocity remains constant at the maximum velocity attainable by the eye. In addition to the kind of saccades described above, the human eye is in a constant state of vibration, oscillating back and forth at a rate of about 60 Hz.

Saccade velocity is the speed measurement during the eye movement. High peak velocities and the main sequence relationship can also be used to distinguish micro-/saccades from other eye movements like (ocular tremor, ocular drift and smooth pursuit).

Saccade latency is the time taken from the appearance of a target to the beginning of an eye movement in response to that target. Disorders of latency (timing) can be seen with saccades, VOR and visual pursuit.

Saccadic Inhibition. Studies of eye movements in continuous tasks, such as reading, have shown that a task-

irrelevant visual transient (for example a flash of a portion of the computer display) can interfere with the production of scanning saccades. There is an absence or near-absence of saccades initiated around 80-120 ms following the transient. This inhibitory effect (termed saccadic inhibition SI) is also observed in simple saccade experiments using small visual targets and it has been suggested that SI may be like, or underlie, the remote distractor effect.

Visual pursuit means the movement of the eyes in response to visual signals. Smooth pursuit eye movements allow the eyes to closely follow a moving object. It is one of two ways that humans and other visual animals can voluntarily shift gaze, the other being saccadic eye movements. Pursuit differs from the VOR, which only occurs during movements of the head and serves to stabilize gaze on a stationary object. Most people are unable to initiate pursuit without a moving visual signal. The pursuit of targets moving with velocities of greater than 30°/s tend to require catch-up saccades. Most humans and primates tend to be better at horizontal than vertical smooth pursuit, as defined by their ability to pursue smoothly without making catch-up saccades. Most humans are also better at downward than upward pursuit. Pursuit is modified by ongoing visual feedback. Smooth pursuit is traditionally tested by having the person follow an object moved across their full range of horizontal and vertical eye movements.

Visual pursuit tracking can be defined as measuring a person's eye movement ability to match a visual element or visual target of interest movement. Visual pursuit eye movements utilize some of the vestibulo-ocular reflex pathways and require a visual input to the occipital cortex to permit locking of the eyes onto a visual element, visual object or target of interest. Pursuit movements are described to be voluntary, smooth, continuous, conjugate eye movements with velocity and trajectory determined by the moving visual target. By tracking the movement of the visual target, the eyes maintain a focused image of the target on the fovea. A visual stimulus (the moving visual target) is required to initiate this eye movement. Pursuit gain, which is the ratio of eye velocity to target velocity, is affected by target velocity, acceleration and frequency. Visual pursuit tracking may be related to factors that are difficult to quantify, such as the degree of alertness present in persons, visual acuity or the visibility of the pursuit target. Visual pursuit tracking can be decayed with alcohol, centrally acting medications such as anticonvulsants, minor tranquilizers, preparations used for sleep. It is also clear that visual pursuit performance declines with age and can be adversely affected by vestibular dysfunction, central nervous system disorders and trauma, such as concussions and traumatic brain injury (TBI).

Visual pursuit accuracy is defined by the ability of the eyes to closely follow a moving object. The pursuit of targets moving with velocities of greater than 30°/s tends to require catch-up saccades. Smooth pursuit accuracy represents how closely the percentage of time the smooth pursuit velocity value remains within the target velocity value.

Visual pursuit movements are much slower tracking movements of the eyes designed to keep the moving stimulus on the fovea. Such movements are under voluntary control in the sense that the observer can choose whether to track a moving stimulus. Although it may appear that our eyes are not moving when we fixate an object, in fact they are in continual small-scale motion, showing irregular drift and tremor, interspersed by miniature saccadic movements (less than 0.5 degrees). These fixational eye movements are essential to prevent our visual percept from fading. Pursuit consists of two phases—initiation and maintenance. Mea-

asures of initiation parameters can reveal information about the visual motion processing that is necessary for pursuit.

Visual pursuit acceleration—this is the rate of change of the eye velocity. The first approximately 20 milliseconds of pursuit tends to be the same regardless of target parameters. However, for the next 80 milliseconds or so, target speed and position have a large effect on acceleration.

Visual pursuit velocity—After pursuit initiation, speed of the eye movement (velocity) usually rises to a peak and then either declines slightly or oscillates around the target velocity. This peak velocity can be used to derive a value for gain (peak velocity/target velocity). It is usually near the velocity of the target. Instead of using peak velocity, it is also sometimes of interest to use measures of velocity at times relative to either target appearance or pursuit initiation. Eye velocity up to 100 milliseconds after target appearance can be used as a measure of prediction or anticipation. Velocity measured 100 milliseconds after pursuit begins reveals something about the ability of pursuit system in the absence of visual feedback.

Visual pursuit latency is defined by the time from target appearance to the beginning of pursuit. The difficulty here is defining when pursuit begins. Usually it is measured from traces of eye velocity. It is often calculated by finding the intersection between two regression functions one fitted to velocity about the time of target appearance, and the second fitted over the initial part of the pursuit response.

Pupillometry refers to an objective way of measuring pupil size, and more specifically, the diameter of the pupil. Often pupil parameters are measured including: maximum, minimum and final pupil diameter, latency, amplitude and peak and average constriction and dilation velocities under numerous stimulus conditions including: dim pulse, dim step, bright pulse, bright step, bright red step and bright blue step. It has been observed that concussions and mild traumatic brain injury adversely affects the pupillary light reflex suggesting an impairment of the autonomic nervous system. Quantitative pupillary dynamics can also serve as an objective mild traumatic brain injury biomarker and these pupillary measurements can be reliably replicated. Quantitative pupillometry can be a measure of concussion analysis and associated with intracranial pressure.

Nystagmus is a description of abnormal involuntary or uncontrollable eye movement, characterized by jumping (or back and forth) movement of the eyes, which results in reduced or limited vision. It is often called “dancing eyes”. Nystagmus can occur in three directions: (1) side-to-side movements (horizontal nystagmus), (2) up and down movements (vertical nystagmus), or (3) rotation of the eyes as seen when observing the front of the face (rotary or torsional nystagmus).

Vergence is the simultaneous movement of both eyes in opposite directions to rapidly obtain or maintain single binocular vision or ocular fusion, or singleness, of the object of interest. It is often referred to as convergence or divergence of the eyes, to focus on objects that are closer or further away from the individual. The maintain binocular vision, the eyes must rotate around a vertical axis so that the projection of the image is in the center of the retina in both eyes. Vergence measurements can easily be performed. Normally, changing the focus of the eyes to look at an object at a different distance will automatically cause vergence and accommodation, known as accommodation-convergence reflex. Convergence is the simultaneous inward movement of both eyes toward each other, usually to maintain single binocular vision when viewing an object. Vergence tracking occurs in the horizontal, vertical, and/or cyclorotary dimen-

sions. Vergence requires that the occipital lobes be intact, and the pathway involves the rostral midbrain reticular formation (adjacent to the oculomotor nuclei) where there are neurons that are active during vergence activities. It comprises a complex and finely tuned interactive oculomotor response to a range of sensory and perceptual stimuli. There is an important interaction between the vergence system and vestibular (inner ear balance) system. To keep the eyes focused on a visual element or object of interest, while the head is moving, the vestibular system senses head rotation and linear acceleration, and activates the eyes to counterrotate to keep gaze constant even though the head is moving. As an example, this is what enables us to see a tennis ball while moving our head. The problem becomes more difficult at near vision, because the eyes are not located at the center of rotation of the head, but rather are about 10 cm anterior to the axis of rotation. Therefore, when a person is focused on a near target (such as 10 cm away), the amount of eye movement needed to keep the target fixated is much greater than the amount needed to view a similar object 100 cm away. This additional eye movement is supplied by the otoliths (linear acceleration sensing element) that produce eye movement that are roughly inversely proportional to the distance of the target from the center of the eye. Persons with disorders of their otoliths, might reasonably have a selective problem with stabilizing their vision while the head is moving, at near vision. Vergence can be also be adversely affected by other factors including aging, visual abnormalities, concussion and traumatic brain injury (TBI).

Vergence eye movements are used to track objects that move in depth in one's binocular visual field to attain and maintain a fused and single percept. When we shift our gaze from a far object to a near object, our eyes converge, the lenses of our eyes modify their focus (accommodate), and our pupils often constrict. These three combined responses are termed the near triad. convergence is the simultaneous inward movement of both eyes toward each other, usually in an effort to maintain single binocular vision when viewing an object. This is the only eye movement that is not conjugate, but instead adducts the eye—divergence is the simultaneous outward movement of both eyes away from each other, usually in an effort to maintain single binocular vision when viewing an object. It is a type of vergence eye movement. The mechanism and control of vergence eye movements involves complex neurological processes that may be compromised in individuals with traumatic brain injury, thus frequently resulting in a wide range of vergence dysfunctions and related near-work symptoms, such as oculomotor-based reading problems. The key pathologic feature of TBI is DAI, also known as a diffuse axonal shear injury, caused by shear-strain injury from rotational acceleration forces. These shear-related injuries commonly occur at the white-gray matter junction, corpus callosum, and superior colliculi, as well as other brain regions. It has been determined that 90 percent of patients have oculomotor dysfunctions encompassing vergence, accommodation, version, strabismus, and cranial nerve palsy in individuals with mTBI and reporting vision-based symptoms. A vergence system abnormality being the most common dysfunction.

The dynamic visual acuity (DVA) can be used interchangeably with kinetic visual acuity (KVA) as they both have the same meaning. In this document, DVA will be used to assess impairments in a person's ability to perceive objects accurately while actively moving the head, or the ability to track a moving object. It is an eye stabilization measurement while the head is in motion. In normal individuals, losses in visual acuity are minimized during head

movements by the vestibulo-ocular system that maintains the direction of gaze on an external target by driving the eyes in the opposite direction of the head movement. When the vestibulo-ocular system is impaired, visual acuity degrades during head movements. The DVA is an impairment test that quantifies the impact of the vestibulo-ocular system pathology on a user's ability to maintain visual acuity while moving. Information provided by the DVA is complementary to and not a substitute for physiological tests of the VOR system. The DVA quantifies the combined influences of the underlying vestibulo-ocular pathology and the person's adaptive response to pathology. DVA testing is sometimes obtained for those persons suspected of having an inner ear abnormality. Abnormalities usually correlate with oscillopsia (a visual disturbance in which objects in the visual field appear to oscillate or jump while walking or moving). Currently with DVA testing, worsening of visual acuity by at least three lines on a visual acuity chart (e.g., Snellen chart or Rosenbaum card) during head turning from side to side at 1 Hz or more is reported as being abnormal. In normal individuals, losses in visual acuity are minimized during head movements by the vestibulo-ocular system that maintains the direction of gaze on an external target by driving the eyes in the opposite direction of the head movement. When the vestibular system is impaired, visual acuity degrades during head movements. Individuals with such ocular performance deficits can improve their dynamic acuity by performing rapid "catch-up" saccadic eye movements and/or with predictive saccades.

Dynamic visual stability (DVS) and retinal image stability (RIS) can be used interchangeably. In this document, DVS will be used to describe the ability to visualize objects accurately, with foveal fixation, while actively moving the head. When the eye moves over the visual scene, the image of the world moves about on the retina, yet the world or image observed is perceived as being stable. DVS enables a person to prevent perceptual blurring when the body moves actively. The goal of oculomotor compensation is not retinal image stabilization, but rather controlled retinal image motion adjusted to be optimal for visual processing over the full range of natural motions of the body or with head movement. Although we perceive a stable visual world, the visual input to the retina is never stationary. Eye movements continually displace the retinal projection of the scene, even when we attempt to maintain steady fixation. Our visual system actively perceives the world by pointing the fovea, the area of the retina where resolution is best, towards a single part of the scene at a time. Using fixations and saccadic eye movements to sample the environment is an old strategy, in evolutionary terms, but this strategy requires an elaborate system of visual processing to create the rich perceptual experience. One of the most basic feats of the visual system is to correctly discern whether movement on the retina is owing to real motion in the world or rather to self-movement (displacement of our eyes, head or body in space). The retinal image is never particularly stable. This instability is owing to the frequent occurrence of tremors, drifts, microsaccades, blinks and small movements of the head. The perceptual cancellation of ocular drift appears to primarily occur through retinal mechanisms, rather than extra-retinal mechanisms. Attention also plays a role in visual stability, most probably by limiting the number of items that are fully processed and remembered.

Foveal Fixation Stability (FFS) refers to the ability to maintain an image on the fovea, which is crucial for the visual extraction of spatial detail. If the target image moves 1° from foveal center, or if random movement of the image

on the fovea exceeds 2°/sec, visual acuity degrades substantially. Either of these conditions may occur if deficiencies in oculomotor control compromise the ability to maintain target alignment within these limits. Many aspects of oculomotor function do change with age. For example, smooth pursuit movements slow with age, and the range of voluntary eye movements becomes restricted, especially for upward gaze. DVA, FFS, and the vestibulo-ocular reflex decline with age.

Focused position of the eyes can be defined as the position or orientation of the eyes to provide a clear image of a visual element or visual object/target of interest on the fovea.

Basic Science: Concussion and traumatic brain injury (TBI)

Broadly speaking, a concussion, the most common type of traumatic brain injury, results from impact or impulsive forces to the head, neck or face and typically affects the central nervous system and the peripheral vestibular system. Most concussions meet criteria for mild traumatic brain injury. Mild traumatic brain injury (mTBI) has been defined as loss of consciousness less than 30 minutes and less than 24 hours and no skull fracture. A moderate TBI has a loss of consciousness greater than 30 minutes and less than 24 hours, with or without skull fracture. Severe TBI is characterized by loss of consciousness greater than 24 hours, with contusion, hematoma or skull fracture.

Due to the variability and subtlety of symptoms, concussions may go unrecognized or be ignored, especially with the pressure placed on athletes to return to competition. There is public consensus that undiagnosed, and therefore untreated, concussions represent a significant long-term health risk to players.

Closed head injury can cause several different types of brain injury including coup, contre-coup, acceleration-deceleration trauma, rotational trauma and molecular commotion. Acceleration-deceleration trauma causes discrete lesions which affect only certain areas of the brain. Both rotational trauma and molecular commotion cause diffuse damage that impairs many aspects of brain functioning. Acceleration-deceleration trauma occurs when the head is accelerated and then stopped suddenly, as with players colliding, which can cause discrete, focal lesions to two areas of the brain. The brain will suffer contusions at the point of direct impact and at the site directly opposite the point of impact due to the oscillation movement of the brain within the skull (e.g., coup or site of contact and contrecoup or opposite site of contact respectively). Trauma results from the oscillation (bouncing) of the brain against bony projections on the inside of the skull. Brain injuries may also occur as a result of acceleration-deceleration trauma unaccompanied by impact. The prefrontal areas and the anterior portion of the temporal lobes are the parts of the brain most often affected by acceleration-deceleration trauma. Thus, if the brain is repeatedly propelled against the front part of the skull, there is likely to be major injuries. Rotational trauma occurs when impact causes the brain to move within the cranium at a different velocity than the skull. This results in a shearing of axons within the upper spinal cord, brainstem and midbrain. Because this type of injury damages neural connections rather than gray matter, it can affect a wide array of cerebral functions and should therefore be considered a type of diffuse injury. Molecular commotion is a disruption in the molecular structure of the brain which may cause permanent changes in both white and gray matter. This type of diffuse brain injury may occur in the absence of discrete lesions.

15

The major effects of trauma on the brain can be divided into two categories: primary and secondary (or late) effects. The primary effects are those that are caused directly by the head trauma and include concussion, contusion, and laceration of the central nervous system.

Concussion is a reversible state of diffuse cerebral dysfunction associated with a transient alteration in consciousness. Most often there is a brief period of loss of consciousness. However, athletes may be only severely stunned or dazed. Typically, there is loss of memory for recent events (retrograde amnesia), and this may extend for some seconds or minutes prior to the injury and, rarely, with more severe impact, for days or more. A variable period of inability to learn new material (anterograde amnesia) typically follows recovery of consciousness and may be dense enough to leave the individual with no memory of early post injury occurrences. Rarely, some players are unable to remember ongoing occurrences. The retrograde amnesia is presumed to be caused by a mechanical distortion of neurons, probably in the temporal lobes, which consolidate the memory trace. The anterograde amnesia is presumed to be the result of distortion of the mesial temporal-limbic circuits known to be necessary for learning.

The underlying pathophysiology of concussion appears to be a shearing effect. Rapid displacement of the head, in either acceleration or deceleration injury, causes a swirling of the cerebrum within the cranium, and shearing forces play most markedly at the junctions between brain tissues of different density and location. Rotational injuries may be particularly damaging, since the brain stem torques while there is a lot of inertia against the rotation of the cerebral cortex. This results in torsion of the nerve fibers in the core of the brain (i.e., the reticular activating system). Another major zone of diffuse axonal injury is the interface between gray and white matter. It is here and in the core of the rostral brain stem that microscopic evidence of ruptured axons can be found pathologically. It is not surprising that the athlete's resistance to future concussion tends to decline with repeated concussions or that repeated concussion may lead to dementia.

Contusions of the brain are bruises usually associated with more severe trauma than necessary for concussion. They are most prominent at the summits of gyri, the cerebral poles (particularly the frontal poles and the anterior temporal lobe), and portions of the brain stem. All these regions lie close to the bony and dural surfaces of the cranial cavity. They may directly underlie the site of the violent blow to the cranium or may be opposite the site of impact (contrecoup). The contusions can usually be seen acutely on CT or MRI scans.

Laceration of the brain usually follows cranial trauma severe enough to cause fracture of the skull and penetrating injury to the brain by skull fragments or foreign objects. However, fracture of the skull need not be associated with laceration or contusion or major concussion. On the other hand, laceration may on occasion occur with severe shearing forces unassociated with fracture. Usually some form of hemorrhage (intracerebral, subdural, epidural) is associated with laceration.

The secondary effects of cranial trauma that may further compromise brain function are edema, hypoxia, hemorrhage, infection and epilepsy. Edema may be the result of diffuse shearing of capillary, glial, and neuronal membranes or may be secondary to local contusion or laceration. Edema can generate local pressure that can compromise both arterial and venous cerebral blood flow, causing ischemia and more edema. This may precipitate a vicious cycle sometimes

16

impossible to reverse. The mass effect of edema, focal or diffuse, can cause rostral-caudal brain stem deterioration (possibly with herniation), a major cause of delayed death from head trauma. Increased intracranial pressure (ICP), mostly due to edema but added to by any intracranial bleeding, is a major cause of secondary injury. High pressure decreases the perfusion pressure in brain blood vessels (since the perfusion pressure is the mean arterial pressure minus the intracranial pressure). If this is too low, there will be further damage to neural tissue due to ischemia, which will result in further edema and an even greater increase in pressure.

Intracranial hemorrhage, arterial or venous, intra- or extracerebral, is a frequent sequela of cranial trauma and may be great enough to cause rostral-caudal deterioration of neural function and death if not recognized and attended to immediately. Rostrocaudal deterioration, if rapid, may itself cause hemorrhage by downward stretching and tearing of the paramedian penetrating arteries of the midbrain and pons. Subdural and epidural hematomas both can be treated via surgical intervention, which can be curative if undertaken prior to irreversible brain damage. Both epidural and subdural hematoma are extracerebral. For this reason, and because they are soft masses, there tends to be relatively little effect on the underlying and compressed cerebral hemispheres. However, due to distortion of the brain itself, secondary rostral-caudal distortion of the brain stem is the process that usually gives rise to the major clinical signs: depression of consciousness (reticular formation), hemiparesis (cerebral peduncles), eye signs (third and sixth nerves), and respiratory pattern abnormalities.

Herniation, the process of squeezing brain tissue from one intracranial compartment into another, is often the terminal occurrence since this produces permanent damage in the region of herniation.

Epidural hematomas are most often arterial. They are usually the result of transection of the middle meningeal artery by a skull fracture that passes through the middle meningeal groove. It must be emphasized, however, that fracture is not necessary since the skull has elasticity that may permit the violent blow to rupture the artery which is pinned between the dura matter and the skull. Because of the location of the middle meningeal artery, the clots typically lie over the lateral hemisphere (temporal and/or parietal lobes). Since the epidural hematoma is under arterial pressure, it typically continues to grow unless evacuated. However, because the dura is adhered to the inside of the skull, and since the clot is between these layers, the growth of the clot is over hours. The typical middle meningeal artery epidural hematoma is associated with a syndrome that appears within hours of the injury.

Classically, trauma is associated with a concussive loss of consciousness. The athlete may awaken from this to achieve a good level of consciousness (lucid interval) only to lose consciousness again from brain stem distortion caused by the clot growth. If the bleeding is very severe there is no lucid interval. The individual does not have time to awaken from the concussion before compressive brain stem deterioration begins. Surgical evacuation is critical. Less often, epidural collections may be the results of tears in the venous sinuses or leakage from the diploic veins. These hemorrhages may occur over any portion of the hemispheres or in the posterior fossa and are much slower.

A subarachnoid hemorrhage (SAH) involves bleeding into the space between the surface of the brain (the pia mater) and the arachnoid, one of three coverings of the brain. Strengthening rod-like fibers known as fibrous trabeculae

cross through the subarachnoid space to connect the arachnoid membrane to the pia mater, and cerebrospinal fluid fills the cavity to flow around the brain. The subarachnoid space also contains the blood vessels which supply the brain and spinal cord with blood and oxygen. This cavity helps to cushion the brain to protect it from injury and continues down the spinal column along with the arachnoid membrane. The hemorrhage is presumed to arise from angular forces that cause shearing of vessels as acceleration/deceleration movement of the brain occurs with linear/tangential/rotational injuries. The bridging veins tend to shear where they enter the dura after passing through the thin subdural space between the dura and arachnoid. Symptoms associated with traumatic subarachnoid hemorrhage may or may not resemble those associated with spontaneous hemorrhage, as trauma can involve multiple injuries with overlapping symptoms. Because the blood is under very low pressure (being from veins) the hematoma tends to collect slowly, causing signs and symptoms that develop over days to months. Head trauma that can be so minor that it is not remembered may result in a subdural hematoma under these circumstances. Acute subdural hematomas are seen less frequently. They are usually associated with head trauma severe enough to cause skull fracture and cerebral contusion or laceration. Epidural hematoma and intracerebral hematoma are frequently associated. The mortality is extremely high, and the residual dysfunction of survivors is severe.

Arterial dissection may affect the carotid or vertebral arteries. This is usually associated with a tear in the intimal lining of the artery and an accumulation of blood in the media. Stroke may result from blockage of the artery or its branches or from artery-to-artery emboli arising from the site of vessel damage. The weakened artery may also rupture (often into the subarachnoid space) with potentially catastrophic results.

#### Pathologic Findings in the Brain with Trauma

Impact forces may cause linear, rotational, or angular movements of the brain, and more commonly a combination of these movements. In rotational movement, the head turns around its center of gravity, and in angular movement it turns on an axis not through its center of gravity. The amount of rotational force is thought to be the major component in concussion and its severity. As the angular acceleration increases, the risk of mild traumatic brain injury increases respectively.

The parts of the brain most affected by rotational forces are the midbrain and diencephalon. It is thought that the forces from the injury disrupt the normal cellular activities in the reticular activating system located in these areas, and that this disruption produces the loss of consciousness often seen in concussion. Other areas of the brain that may be affected include the upper part of the brain stem, the fornix, the corpus callosum, the temporal lobe, and the frontal lobe. Severe centrifugal forces exert tremendous shearing pressures on the brainstem and upper spinal cord. A form of neurodegeneration reported in professional football players is "Chronic Traumatic Encephalopathy" (CTE). In addition to football players, CTE has been reported in other athletes involved in violent blows to the head, in traumatic military activities and in a few non-athletes with a history of TBI.

The syndrome of CTE begins insidiously, usually many years after the individuals have stopped playing sports or their other activities, with inattention, mood and behavior disturbances, confusion, and memory loss, and progresses inexorably over many years to a stage of full-blown dementia and parkinsonism. The brain, in CTE, shows atrophy, dilatation of the lateral and third ventricles, and thinning of

the corpus callosum. Microscopic examination reveals hyperphosphorylated tau (p-tau) deposition in neurons, astrocytes, and cell processes around small vessels. These changes are patchy and affect the deeper parts of cerebral sulci. Other neurodegenerative pathologies, including beta amyloid deposition in the form of diffuse or neuritic plaques, amyloid angiopathy, TDP-43-inclusions may co-exist with p-tau deposition. Tau deposition is the key cellular change in CTE. The cause of CTE is thought to be TBI, especially repeated cerebral concussions and sub-concussive trauma. In the acute phase, concussion, especially following side-to-side hits to the head, causes diffuse axonal injury (DAI) and triggers the release of tau and beta amyloid in the brain. This, along with cerebral hypoxia, excitotoxicity and inflammatory mediators, set in motion a progressive destructive cascade that causes neurodegeneration many years later.

Diffuse axonal injury (DAI) is a special traumatic lesion, which occurs following blows to the unsupported head. During such injuries, the cerebrum goes into a back and forth gliding motion, pivoting around the brainstem. The brainstem, together with the cerebellum, is held firmly fixed by the tentorium, and the falx prevents side-to-side motion. Axons are stretched but do not snap from this injury. Their sudden deformation causes changes in the axonal cytoskeleton (compaction of neurofilaments, fracture of microtubules) that lead to an arrest of the fast axoplasmic flow. Components of this flow, including mitochondria and other organelles, accumulate proximal to the lesion and cause axonal swellings (spheroids). Some axons with mild lesions probably recover but many eventually rupture. It takes several hours from trauma to axonal rupture. Influx of calcium through the stretched axolemma probably initiates the process that leads to the formation of spheroids. Mitochondrial dysfunction and neuroinflammation contribute to the local tissue injury. Ruptured axons undergo Wallerian degeneration leading to loss of neurological function. Loss of axons may lead to dying back of neurons. Thus, DAI is a multifaceted process that evolves over time. The swellings are located at nodes of Ranvier where the axolemma is more liable to deform because there is no myelin. Brain damage is most severe along midline structures (corpus callosum, brainstem) where the shear forces are greatest, and at the cortex-white matter junction because of the change in the consistency of brain tissue. Cerebral concussion is thought to be a mild form of DAI without permanent pathology. The loss of consciousness in concussion is probably due to a functional disturbance of the reticular activating substance of the brainstem. This is part of the central nervous system that is subjected to the highest twisting force during sagittal rotation of the hemispheres.

#### Faceguard as an Ocular Performance-Based Measurement Device

Referring now to the figures that describe the faceguard as a device which can be used for ocular performance measurements, FIG. 1 shows the head orientation sensor 404, is rigidly attached to the centered ocular performance measuring faceguard 440. In at least one embodiment, the head orientation sensor 404, senses (is responsive to) pitch, roll, and/or yaw. Pitch can be described as upward or downward movement of the face. Roll can be described as rotation of the face when viewed from the front. Yaw can be described as leftward and rightward movement of the face when viewed from the front. The head orientation sensor 404, can be constructed from one or more elements or it can be monolithic. The head orientation sensor 404, can use one or more accelerometers, gyroscopes, magnetometers, or any other relative or absolute position, velocity, or acceleration

19

sensing device capable of being understood by anyone skilled in the art. In one embodiment, the orientation sensor comprises a micro-electro-mechanical system (MEMS) integrated circuit.

Further referring to FIG. 1, the eye sensor **406**, is more specifically an eye tracking digital video camera that is pointed at the eyes of the person. The eye sensor **406**, can be responsive to any eye position, including vertical movement of the eyes (which represents pitch), rotation of the eyes (which represents roll), and horizontal movement of eyes (which represents yaw). It can also be responsive to eyelid position. There can be one eye sensor camera **406** that monitors only one eye, one eye sensor camera **406** with a wide angle that can monitor both eyes, or two cameras with one to monitor each eye. There can also be multiple cameras, to monitor different areas of each eye (e.g., eye response sensors tracking pupil features and corneal reflection surfaces). The eye sensor video camera **406**, can be positioned anywhere around the eye, and can utilize visible or invisible light. In one embodiment, the system shown at **440** further comprises an illumination source **530** to help illuminate the eyes of the person. This illumination source **530** could project infrared light, near infrared light, or visible light in the direction of the person's eyes to help improve the sensitivity of the eye sensor **406** and make it less sensitive of other light sources, which may produce noise and/or glint.

FIG. 1 illustrates one example of a faceguard-based ocular performance measuring system **440**. In this embodiment, the faceguard frame is shown at **442**. The faceguard frame **442** could comprise a plurality of rigid structural members with at least one aperture for facilitating human vision through the faceguard. The faceguard frame **442**, could comprise materials such as metal, carbon fiber, plastics, glass fiber, or any combination of these materials or others capable of being understood by anyone skilled in the art. The faceguard frame **442**, could comprise eye sensing elements and/or transducers for detecting and measuring eye movements and a head orientation sensing element/transducer and circuitry to the electronic elements such as:

- the head orientation sensor shown at **404**, connected to the orientation sensor signal processor **412**;
- the eye-tracking digital video camera **406**, connected to the eye camera video processor **414**; and
- the central processing unit **418**, memory unit **420**, and interface/communication unit **422** for communicating with an external device **424**.

The faceguard-based system **440**, of FIG. 1 could have other sensors that interface with the electronic module **410**. The faceguard-based system **440**, could have an attached display and display interface. However, a display might be difficult for the person to use when active and therefore could be removable and used only when testing is performed. As an alternative, the faceguard-based system **440**, of FIG. 1 might have a forward-facing camera **408**, that communicates with a forward-facing camera interface **428**, in the electronic module **410**. The forward-facing camera **408**, can be responsive to the eye sensors to measure the ocular performance. In this case, the central processing unit **418**, or the external device **424**, could combine the information from the head orientation sensors **404**, the eye-tracking digital video camera **406**, and the forward-facing camera **408**, to determine one of the ocular performance parameters described herein.

Embodiments of the present invention could be implemented with eye trackers (also described herein as eye sensors), shown for example at **406** in FIG. 1, which are not

20

video cameras. Examples of non-video camera eye trackers can include electromyography trackers and electromagnetic trackers.

FIG. 2 shows an example of a vestibulo-ocular performance calibration test that can be implemented using a head-worn faceguard unit. This test comprises the following configuration and steps:

Establishing a faceguard unit **602** that comprises a display **604**, a head orientation sensor **606**, and an eye tracking video camera **608**.

Head: In this test, the subject is asked to keep his/her head motionless or the head is constrained to keep it motionless. The head orientation sensor **606**, is used to verify that the head is stationary.

Eyes: The subject is asked to track a visual target element of interest by moving his/her eyes. The eye sensor (typically a video camera) measures the subject's eye movement **642**, as visual elements are displayed.

Display: The display background is subdued, plain, solid, and/or non-distracting. In this test, the display background can be similar to the background that has been used in prior art VOR testing in which the subject is asked to look at a plain background which has a bright white circular dot (the target visual element of interest) projected on it. In another embodiment of this test, a target visual element of interest can be visually enhanced for better image or target eye fixation. The target visual element of interest then behaves in the following way:

1. The target visual element is initially displayed centrally **610**.
2. It is then displayed off center on a first side (left or right) of the display center as the central image is dimmed, as shown at **612**. This is typically about 20-25 degrees off center.
3. It is then displayed off center on the opposite (or second) side of the display center as the previous image to the first side is dimmed, as shown at **614**. This is also typically about 20-25 degrees off center.
4. This process of dimming or removing the target visual element of interest on one side and displaying it on the opposite side is repeated as many times as needed, as shown at **616**.
5. This test can be conducted in the vertical, as well as the horizontal direction.

Processor: The processor in the faceguard system then compares eye movement to timing and appearance/disappearance of visual elements on display, and the location of these visual elements to determine vestibulo-ocular performance **644**. Performance could be measured as accuracy, gain, phase, symmetry, velocity, saccades, and/or visual acuity.

FIG. 3 shows an example of static active vestibulo-ocular performance testing that can be implemented in a faceguard unit. This test comprises the following configuration and steps:

Establishing a faceguard unit **602** that comprises a display **604**, a head orientation sensor **606**, and an eye tracking video camera **608**.

Display: In this test, the display is static—neither the background nor the target visual element of interest moves or changes in any way. The display comprises a subdued background and a centered white circular dot or visually enhanced target element **610**, similar to what was described with reference to the test shown in FIG. 2.

## 21

Head: In this test, the subject is asked to actively move his/her head each time he/she is given a cue signal. The head should typically move about 20-25 degrees off center about a vertical axis (i.e. left or right). The head orientation sensor measures changes in head pitch, roll, and/or yaw **640**.

Eyes: The subject is instructed to keep his/her eyes focused on the target visual element as the head moves. The eye sensor (typically a video camera) measures eye movement **642**, relative to head movement **640**.

Cues are provided to tell the subject when to move the head. These cues can be audio cues. The cues could be haptic (i.e. vibration on the side of the person's head). The cues could be visual (i.e. change of color or intensity of the visual target element of interest). The cues are typically timed randomly so the subject doesn't try to anticipate the timing.

The test sequence is as follows:

1. The subject is instructed to move the head about 20-25 degrees in one direction when a first cue is given, and to hold the head in this new position **622**.
2. The subject is instructed to move the head back about 20-25 degrees when the second cue is given **624**.
3. The subject is instructed to move the head in the first direction a second time when the third cue is given.
4. The process is repeated as many times as needed **626**.
5. This test can be conducted in the vertical, as well as the horizontal direction.

Processor: The processor in the faceguard system then compares head and eye movement to timing and appearance/disappearance of visual elements on display, and the location of these visual elements to determine vestibulo-ocular performance **644**. Performance could be measured as accuracy, gain, phase, symmetry, velocity, saccades, and/or dynamic visual acuity.

FIG. 4 shows a static passive vestibulo-ocular performance test that can be implemented in a faceguard unit. This test comprises the following configuration and steps:

Establishing a faceguard unit **602** that comprises a display **604**, a head orientation sensor **606**, and an eye tracking video camera **608**.

Display: In this test, the visual image seen is the same as for the test described with reference to FIG. 2 and FIG. 3, with a target visual element presented in the center **610**.

Head: In this test, the assistant holds the subject's head and moves it about 20-25 degrees each time **632**. The head orientation sensor measures changes in head pitch, roll, and/or yaw **640**.

Eyes: The subject is instructed to keep his/her eyes focused on the target visual element as the head moves. The eye sensor (typically a video camera) measures eye movement **642** relative to head movement **640**.

The test sequence is as follows:

1. The assistant moves the subject's head about 20-25 degrees in one direction and then holds it in this new position **632**.
2. The assistant then moves the head back in the opposite direction, 20-25 degrees and holds it **634**.
3. The assistant moves the head in the first direction a second time.
4. The process is repeated as many times as needed **636**.
5. This test can be conducted in the vertical, as well as the horizontal direction.

Processor: The processor in the faceguard system then compares head movement and eye movement to deter-

## 22

mine vestibulo-ocular performance **644**. Performance could be measured as accuracy, gain, phase, symmetry, velocity, saccades, and/or dynamic visual acuity.

There can be many additional embodiments of the ocular performance tests described with reference to FIG. 2, FIG. 3, and FIG. 4. Some of these embodiments can include combinations of the variations listed here:

- a. The visual target element (an example of which would be a white dot or a visually enhanced target element) can be any other shape, size, or coloring or have any other features capable of being understood by anyone skilled in the art. Examples of these variations in the target visual element could include:

A different shape (such as a shape comprising a cross hair);

Different contrast, either more or less;

Different intensity;

Different size;

Different focus, either more in-focus or out of focus;

Having one or more features in the visual element that move relative to the rest of the visual element;

Different depths;

The appearance of a natural object (such as a baseball, a basketball, or a bird); and/or;

Any combination of any of the above.

- b. The test shown in FIG. 3 and/or FIG. 4 could be run with the target visual element not being stationary. This would make the overall test more similar to a natural environment in which the head, the eyes, and the visual world are all moving relative to one another and relative to a stationary reference frame at all times. The target visual element could:

Move with the head movement;

Move contrary to the head movement;

Move perpendicular to head movement; and/or

Move in any random pattern not associated with head movement

- c. The background (traditionally subdued, plain, solid, and/or non-distracting), visualized through the faceguard or seen through a display mounted to the faceguard unit, could be presented as any other background understood by anyone skilled in the art. Examples of variations of the background can include embodiments in which the background is more natural and similar to actual scene and/or any of the variations in the following list:

The background can be completely static;

The background can have moving and/or flashing elements;

The background can be enhanced with auditory distractions consistent with the imagery being displayed;

The background can be in or out of focus;

The background can be low intensity/contrast or high intensity/contrast relative to target of interest;

The object of interest or image can utilize foveated rendering, in which only the target of interest which the user is visualizing is seen clearly, where the fovea is focused, and the remainder of the adjacent region is less detailed.

Visual acuity, visual fixation ability, DVA (dynamic visual acuity), KVS (kinetic visual acuity), FFS (foveal fixation stability), and/or RIS (retinal image stability) can be tested using a system and method similar to the vestibulo-ocular performance (VOP) test shown in FIG. 3 and/or FIG. 4. The following are the main steps of a DVA, FVS, FFS or RIS test performed in this way using a faceguard:



Step 1. Perform a routine vision test by presenting a Snellen chart, or something similar, using the display of the faceguard unit. This is needed to establish a baseline visual acuity in a static environment. This static test does not necessarily need to be done with a Snellen chart (the standard chart used by optometrists and ophthalmologists), it could also be done by asking the subject to identify characters of various sizes, positions, and/or locations.

Step 2. The subject is presented a visual element (such as a number or letter) in the visual field center in a manner similar to step 610 of FIG. 3, but in the case of a DVA or FVS test, the target visual element also comprises a character that the subject must identify.

Step 3. The size and character of the target visual element in the visual field center changes at random times while the subject is performing the steps described at 622, 624, and 626 in FIG. 3 and/or 632, 634 and 636 in FIG. 4.

Step 4. The subject speaks out the character observed each time it changes.

A faceguard system can also be used for positional testing. For example, a display attached to the faceguard can be configured to present a background that has illumination, but no definable image that might provide orientation information to the subject. The subject, could be asked to turn the head left, right, lie supine, while supine head turns right, head turns left, then turn the body (roll) right and turn the body (roll) left. During each positional change, the eyes are tracked using the faceguard system to look for abnormal eye movements. If a target visual element was visible during this testing, the nystagmus would be suppressed. However, elements with poor contrast can be displayed to provide a more immersive test environment. Visual elements in this instance should not have defining characteristics that might enable eye fixation.

A subject can be tested for BPPV using the method shown in FIG. 4 with the assistant moving the head in a specific pattern that allows the individual semicircular canals to be tested. Note that this means the head is not moved the 20 degrees side-to-side, but is instead moved based on standard protocol for the specific semicircular canal being tested.

FIG. 5A, FIG. 5B, and FIG. 5C provide graphs of time versus angular velocity that show how ocular response to a vestibular input can be measured. In these figures, the input is a rotation of the head, which is shown as the solid line at 701. This head rotation information would typically be measured using the head orientation sensor 404, that has been shown in FIG. 1. The output is the eye response to the head rotation, which is shown as the dotted line at 702, 703, and 704, and would typically be measured using the eye sensor, which is typically an eye tracking digital video camera 406, such as that shown in FIG. 1. The actual eye response is in the direction opposite of the head rotation, 701, but it has been plotted in the same direction to make it easier to compare the input and output of a person's vestibulo-ocular system. In FIG. 5A, the velocity of the eyes is slower than that of the head, which results in a gain of less than 1.0 (i.e. a loss of amplitude 702). In FIG. 5B there is a delay between the rotation of the head and the rotation of the eyes, which results in a phase lag, 703. In FIG. 5C, the eye rotation also lags the head rotation as shown at 704, but is caught up by saccades 705 near the end of the rotation.

The measures shown in FIG. 5A, FIG. 5B, and FIG. 5C, can be plotted at different frequencies and compared between the left eye and the right eye to create the plots shown in FIG. 6A, FIG. 6B, and FIG. 6C, which illustrate

some typical eye responses to oscillation of a healthy person's head (e.g., vestibulo-ocular responses) in a horizontal plane at frequencies ranging from 0.1 Hertz (1 cycle every 10 seconds) to 1.28 Hertz (approximately 5 cycles every 4 seconds). More specifically, FIG. 6A shows the gain at these frequencies, FIG. 6B shows the phase lead and lag at these frequencies, and FIG. 6C shows the relative symmetry (or asymmetry) between clockwise and counterclockwise oscillations. It should be noted that 0.1 Hertz to 1.28 Hertz is typical for the range of frequencies being used by prior art VOR testing systems. The embodiments described in this disclosure can include any frequency in the range of 0.01 Hertz (1 cycle every 100 seconds) to 15 Hertz (approximately 15 cycles every second).

FIG. 7A, FIG. 7B, FIG. 8, FIG. 9, FIG. 10, and FIG. 11 relate to targets or visual elements that could be visualized or projected without the use of faceguard displays or presented on a faceguard display to facilitate measurement and/or improve ocular performance parameters such as vestibulo-ocular reflex function, visual pursuit, vergence, DVA, or other ocular parameters discussed herein. These targets or visual elements can be designed to enhance the eye fixation on the displayed image when the head is motionless and the visual element is in motion. These targets or visual elements could also be designed for when the head is in motion and the visual element is motionless or when both the head and the visual element are in motion. In embodiments of the invention, the displayed targets or visual elements can be static in a position or location or the displayed targets or visual elements can be dynamically changing in position, depending on the specific test being performed or rehabilitation method being used. The targets or visual elements, upon which the eyes are attempting to focus, can be of a variety of colors, sizes, shapes, and forms. They can change in color, size, shape, and form. They can contrast with other items being displayed to be more or less dominant in order to provide visual weight to enable fixation. These targets or visual elements can use specific colors with more saturation and can change in scale and proportion, all in an effort to draw the fovea toward a specific point of fixation on the target or visual element. Generally, it is important to have some small point of focus on the visual element to lessen the microsaccades and enhance the fixation ability. These same targets or visual elements can be used for any oculomotor or ocular performance testing including VOR re-training when a VOR abnormality exists.

The ideas expressed in the previous paragraph can best be explained by looking at some examples. FIG. 7A shows an example of a target or visual element in the form of a soccer ball 902. This soccer ball could be part of an existing scene viewed through a faceguard or projected on a display, attached to a faceguard. The soccer ball could be spinning, which might make the pattern on the ball distracting. FIG. 7B shows the visual element (soccer ball) of FIG. 7A that has been altered by defocusing the ball 904, and superimposing a target in the form of a cross-hair 906, that is more precise for the eyes to focus on. It would be more accurate fixation for the eyes to focus on the center of the cross-hair element shown in FIG. 7B than the element shown in FIG. 7A due to the shape, size, contrast, and suppression of the pattern on the ball. Although this example has been done using a black and white image, color and color contrast can be more effective. For example, the visual element seen through the faceguard or with an attached faceguard display, could be a red colored ball. Within the center of the red ball, a yellow circle can be present with a small black dot located in the center. This strongly contrasted central focal point

25

could help the eye focus on a specific point and lessen the “eye scanning” while undergoing any ocular performance measurement such as VOR testing or VOR re-training. In another example, the element being viewed can be in the shape of a familiar object, such as a basketball, football, helmet or object used in one’s occupation. It can also have a centered focal point, created by high contrast and high color saturation compared to the surrounding background to maintain the foveal fixation duration attractiveness and lessen microsaccades.

FIG. 8 shows a scene that can be used for optokinetic testing. In traditional optokinetic testing, a person’s head is motionless while seated inside a moving drum with alternating black and white vertical lines or alternatively, a hand-held drum, with alternating black and white vertical lines, is placed in front of the person. The drum is slowly rotated. The alternating lines induce nystagmus and cause visually induced motion sickness. The movement of the eyes is measured as the drum rotates left and then right. Measurements can be at different drum speeds. This same test can be performed using a faceguard by creating a visual image that includes elements that work just like the vertical lines in the drum. Examples of natural scenes that are similar to the drum with lines can include examples such as being seated in a car and watching a train go by or driving and watching the telephone poles move by, such as the scene 910 shown in FIG. 8. Similarly flying objects can be visualized as moving across the visual field or along another plane of motion beside the person. These visual elements can also change in size, color or other dimensions, as the person gets closer to the object or further from the visual element. Motion can occur in any direction or depth relative to the person, as the eye movement is being assessed and measured.

FIG. 9, FIG. 10, and FIG. 11 illustrate other visual scenes, which can be seen through the faceguard or used with a display attached to a faceguard. These visual scenes can be used for ocular performance testing such as VOR, DVA, visual pursuit, and/or fixation ability testing. These scenes can include a test environment comprising natural background features combined with a visual element or target whose shape, color, size, motion, depth, or other attributes have been selected or added to facilitate testing of vestibulo-ocular performance. FIG. 9 shows an example of a scene which illustrates what this type of ocular performance testing, such as with visual pursuit, DVA and/or VOR might look like. In the example shown in FIG. 9, the static scene can be a tennis court and the moving target is the tennis ball 920. The visual element (e.g., tennis) can remain motionless in the center, surrounded by a static court with 2 players on each side. The individual being tested would rotate his/her head in the horizontal and vertical plane while focusing on the visual element. Alternatively, as the person focuses on the static visual element in front of the player on one side of the court, it can suddenly become dimmed and re-appear on the other side of the court. The individual being tested is required to rotate the head each time the visual element reappears. This action can occur in a back and forth manner until the measurement is complete. For more complex testing, the surrounding courtside scene can be filled with fans who are in motion. As another example, if the VOR is being tested on a basketball player, the dynamic background features may be a basketball court surrounded by fans, who are yelling and moving and the visual element (e.g., basketball) may suddenly appear in the hands of a player on one side, then dimmed or removed, and then alternatively appear in the hands of another player on the other side, requiring the

26

individual being tested to move the head in a horizontal manner. DVA measurement can also be performed with dynamic changes of the target or visual element of interest, requiring the person to identify characteristics of the element while it is in motion and the person is in motion and comparing this to the SVA prior to the onset of the DVA test. FIG. 10 shows letters that could be superimposed onto the moving element (such as the tennis ball in FIG. 9) to test DVA. The target visual element 920 in FIGS. 9, 930 and 932 in FIG. 10, or 940 in FIG. 11 could move in different trajectories, in different depths, the letters could be of different sizes, and the ball could move at different speeds and accelerations to provide a meaningful test as shown by comparing visual element 930 with visual element 932. The targets can be static or rapidly moving in a specific plane or scan path for (such as watching a tennis ball move across the court or with tracking tests that have a rotating target visual element) depending on the ocular parameter being tested.

DVA testing could be performed with lettered optotypes and as the head rotates back and forth, the letters can rotate in position. Alternatively, numbers can be used as well as other familiar images of objects. The images can also be native or natural to the background environment. As the head rotates back and forth, the target or visual element is more difficult to visualize. If there is a VOR abnormality, for example the eyes will not be able to focus on the target or visual element of interest and will subsequently have less fixation and more errors in identifying a visual element. Measurement can also be performed with the visual element stationary and the head in motion or both the visual element and head in motion, which would be more realistic with everyday experiences. Static visual testing (SVT) can be performed to obtain a normal visual test. The visual acuity can be obtained, while the head and the visual element, or optotype being seen through the faceguard or with the use of an attached display, are both motionless. Similar to a standard eye exam, a faceguard with an attached display system can measure a person’s static visual acuity (SVA), a component of DVA testing, by asking a person to identify a multitude of images or optotypes (letters, symbols, characters, figures of different sizes, shapes, orientation) on the visual screen.

Visual pursuit testing can be performed with similar targets or visual elements of interest as have been described previously. Smooth pursuit testing has traditionally been performed with the head motionless and the eyes following a moving light or finger moving across a visual field. FIG. 11 shows a scene that can be used for scan path tracking. An enhanced target visual element 940, can be sent across the scene along a specific path 942, while the measured eye movement follows the visual element. The path of these visual images or elements can assume any pattern, such as a zigzag, a saw toothed, or a square wave, or have a scan path that is snake-like, curved, circular, sinusoidal or rotational to provide a realistic and natural method of assessment of visual pursuit.

FIG. 12 shows the relationship between target movement, eye position 1601, eye velocity 1603, and eye acceleration for smooth pursuit. The time when the target is moved is identified as  $t=0$  ms. The eye position 1601, and eye velocity 1603, can then be tracked as a function of time. Latency 1609, is the delay from the time the target moves to the time the eye starts to move. Then the eye velocity 1603, will first accelerate 1605, and decelerate 1607, until the eye velocity 1603, matches the target velocity.

FIG. 13A shows the relationship between target movement, eye position 1701, and eye velocity 1703, for a

saccade. The time when the target is moved is identified as  $t=0$  ms. The eye position **1701**, and eye velocity **1703**, can then be tracked as a function of time. Latency **1707**, is the delay from the time the target moves to the time the onset of a saccade. As shown, the saccade eye velocity **1703**, increases, reaches a peak velocity **1705**, and then returns to zero. The length of time from the start to the end of this velocity curve is called the saccade duration **1709**. The saccade eye position **1701**, changes during this duration **1709** to reach a new position that differs from the initial eye position by a distance that can be defined as a saccade amplitude **1711**. FIG. 13B shows the typical relationship between saccade amplitude and saccade duration.

Note that any of the testing described for any of these embodiments can be done with static targets or visual elements being viewed, or with dynamic targets or elements. The images or elements viewed may be familiar objects, such as balls, or objects more familiar to one's occupation. The visual target or visual elements may be displayed in a manner that is native or natural to the background.

FIG. 14 provides a more generalized embodiment of the system and method that was presented in FIG. 2, FIG. 3, and FIG. 4. Referring to FIG. 14, the faceguard unit that was shown at **602**, in FIG. 2, FIG. 3, and FIG. 4, is also shown in FIG. 14. The eye tracking video camera on the unit that was shown at **608**, the scene or display **604**, and the head orientation sensor **606** in FIG. 2, FIG. 3, and FIG. 4 is also shown in FIG. 14. As shown in FIG. 14, the process can further include the step of choosing a scene **1810**, and the choices of scenes can comprise a static scene with a solid background **1812**, a static scene with a complex background **1814**, and/or scene with dynamic (i.e. moving) elements in the background **1816**. The process shown in FIG. 14 includes the step of presenting a target visual element in the center of the scene or **610** and **620**, just like the processes shown in FIG. 2 (steps **612**, **614**, and **616**), FIG. 3 (steps **622**, **624**, **626**), and FIG. 4 (steps **632**, **634** and **636**).

Further referring to FIG. 14, the method can comprise the step of choosing which ocular test to run on a subject as shown at **1820**, and the choices can include ocular performance calibration **1822**, static target and active head movement testing **1824**, and/or static target and passive head movement testing **1826**. Each of these three test processes (**1822**, **1824**, and **1826**) involves measuring eye orientation changes **642** and head orientation changes **640**, just like the processes shown in FIG. 12, FIG. 13, and FIG. 14. These ocular performance parameters can include any of the following parameters that have been discussed in other parts of this disclosure, including but not limited to:

- (a) vestibulo-ocular reflex;
- (b) pupillometry;
- (c) saccades (overt and covert);
- (d) visual pursuit tracking;
- (e) vergence (convergence and divergence)
- (f) eyelid closure;
- (g) dynamic visual acuity;
- (h) dynamic visual stability;
- (i) retinal image stability;
- (j) foveal fixation stability;
- (k) focused position of the eyes;
- (l) visual fixation of the eyes at any given moment and
- (m) nystagmus

In an alternate embodiment to the configuration shown in step **1824** in FIG. 14, the visual target of interest can be dynamic and the head movement can also be dynamically moving in the same or opposite direction as the visual target

movement. The process is repeated as many times as needed. This test can be conducted in the vertical, horizontal or any other direction.

Regarding the forward-facing camera, shown at **408** in FIG. 1, it should be noted that this forward-facing camera **408** can be configured to record an image of what the user is seeing. In the embodiments discussed herein, the forward-facing camera **408**, can be configured to determine, measure and log where the eyes of an individual, such as an athlete or military person, are looking during their play, occupational or military activities. This can be used to measure the duration of time an individual is visually focused on an object or target of interest. For example, this can measure if an athlete or military person can see an opponent or parts of an opponent (such as the hand or helmet) more quickly in time than others and how long the individual maintains focus on the visual object during the play or activity. This can be correlated with the eye tracking video camera **406**, for measurement of reaction times. Individuals with highly focused ability on the object of interest can more accurately anticipate and more precisely predict the movements of their opponents. This data can be used in training and/or the selection process of individuals prior to performing the activities needed.

Further referring to FIG. 1, the forward-facing camera **408**, can be configured to adjust its field of view, focal length, or to zoom in or out in response to an eye sensor. The electronic module **410**, using the central processing unit **418**, could control the forward-facing camera **408**. This control of the forward-facing camera **408**, could be through wired or wireless electronic signals. The forward-facing camera **408**, could transmit video information to the electronic module **410**, and this video information could analog or digital information and could be transmitted through a wired or a wireless connection. The information collected and/or recorded by the forward-facing camera **408**, can be responsive to the eye sensors **406**, to measure ocular performance parameters. For VOR measurement, head rotation information would be measured using the head orientation sensor **404**. The information collected and/or recorded by the forward-facing camera **408**, could also be used, in conjunction with other information collected by the faceguard system, for capturing visual images of the user's surroundings, and determine the intended focal point of the use. As discussed previously, this determined intended focal point can be measured and correlated with the fixation accuracy of the eye tracking sensors. The user can also perform a predetermined action with the his/her eye(s) by focusing on a specific image or orienting the eye in a specific manner as an input control. Data collected can be uploaded and transmitted to a remote or external device.

Embodiments of the invention(s) disclosed herein can utilize a faceguard, with forward facing camera and method to detect and manage concussions, traumatic brain injury in athletes and other subjects such as military personnel. In these embodiments, of the faceguard, head orientation measurements and ocular parameter measurements are utilized including but not limited to vestibulo-ocular reflex, pupillometry, saccades, vergence, dynamic visual acuity, eye-lid closure, focused position of the eyes, kinetic visual acuity, virtual retinal stability, retinal image stability, foveal fixation stability and nystagmus.

Embodiments of the invention can incorporate other impact mitigation elements and sensing elements/transducers for detecting any abnormal physiological or biochemical properties of the user.

In the embodiments disclosed herein, the forward-facing camera can be responsive to the eye sensors to measure the ocular performance described. It can visualize "world" objects in motion and then correlate these visual objects seen by the user with user eye movements. Measuring the visual object, the user is focusing upon, can be used to determine a prediction component of the user eye motion based on the visual target motion (e.g., Motion Tracking with Predictive Index Factor).

#### Sensors

Embodiments of the invention(s) disclosed herein utilize sensors. These sensors can also be referred to as sensing elements/transducers and/or transducers. In embodiments disclosed herein, these sensors can be used to detect and measure specific physical phenomena such as ocular performance and head orientation. There can also be sensors that measure physiologic, biochemical, and biometric values. The faceguard can incorporate sensors or sensing elements/transducers. The sensing elements/transducers could be placed or positioned to measure various properties of the faceguard. Sensing elements can deploy a response to input information. One example would be a pneumatic element (e.g., pneumatic/inflation bag, cushion or pad) from the faceguard, which can alter or change its characteristics prior to imminent impact. The sensing elements, sensors, or transducers can exhibit artificial intelligence in response to imminent blow information detected and the measured threshold values to determine the abnormal value necessary to elicit a response. These sensing elements/transducers on the faceguard can be self-altering, self-adjusting, change shape or characteristics after an impact and resume pre-impact state. The sensing elements, sensors, or transducers can also allow observers to remotely check the status any of the sensing elements/transducers described and can change the parameters of the sensing element/transducer measurement or sensitivity if needed. Sensing elements/transducers on the faceguard can record information of how many times an impact has occurred to the faceguard and the force of the impact to the faceguard. Artificially intelligent sensing elements/transducers can also change a faceguard material characteristic shape and resistance, depending on the impending impact detected.

These sensing elements/transducers can be pressure sensitive, ultrasonic, mechanic, electrical, electromagnetic, responsive to haptic, graphene, PVDF (polyvinylidene fluoride sensing, fluid-based sensing elements/transducers, microelectromechanical systems (MEMS)-based on accelerometers, silicon-based solid-state accelerometers, binary sensing elements of plastic housing and working fluids to detect instantaneous acceleration (impact).

In another embodiment, the abnormally measured physical, physiological and/or biochemical parameters can be wirelessly transmitted and displayed to an observer and/or provide a local, adjacent or remote response, alert or warning. This response to an abnormal value can be in the form of an optically perceptible response, such as photofluorescence, or can be a haptic, vibratory, or acoustical, either to the user and/or the device of the observer. For example, the faceguard or specific portion of the faceguard can change colors, emit a light, display or generate another signal response when an abnormal pre-determined impact threshold to the faceguard is reached, when abnormal oculomotor findings are measured and/or when an abnormal physiological or biochemical pre-determined value is measured.

In another embodiment sensing elements/transducers located on the faceguard can detect where the eyes are looking and focused, which can be correlated with a for-

ward-facing camera and can log the data statistics on eye movements and point of fixation of the eyes and any given time. These sensing elements/transducers can measure human ocular performance include the vestibulo-ocular reflex, saccades, visual pursuit tracking, pupillometry, vergence, convergence, divergence, eye-lid closure, dynamic visual acuity, kinetic visual acuity, retinal image stability, foveal fixation stability, focused position of the eyes or visual fixation at any given moment and nystagmus. Data from the faceguard can be transmitted to a remote device such as smart watch or another smart device.

#### Eye Tracking

To measure some specific eye responses (such as VOR, DVS, DVA or other ocular performance measures), both eye tracking and head tracking measurements are required. Eye tracking is the process of measuring either the point of gaze (where one is looking) or the motion of an eye relative to the head position. An eye tracker is a device for measuring eye positions and eye movement. Eye tracking and/or measurement can be done in many ways, examples of which include using a face guard with eye sensors and a head orientation sensor and having the user look at a projected image in a natural environment;

The eye tracking and/or measurement can also be done:

- (a) in a non-contact fashion with the use of a light source (invisible light, such as with the use of an infra-red camera or light, or visible light); and
- (b) by using a video camera or other sensor system designed to visually capture and record the eye movement activity.

If one or more video cameras are to be used for eye tracking, it is desirable to have a sampling rate at least 60 frames per second (60 Hz) and preferably at least 60-120 Hz. Many video-based eye trackers have sample rate of at least 30, 60, 120, 250, 350 or even 1000/1250 Hz. In embodiments of the present invention, eye tracking might typically use a sampling rate minimally of 60 Hz, but more typically at 120 Hz-350 Hz. These higher sampling rates may be needed in order to capture fixation of eye movements or correctly measure other saccade dynamics or capture the detail of the very rapid eye movement during reading, or during neurological evaluations, such as with concussions.

In embodiments of the invention, a light source can be used to illuminate the eye(s) and aid in eye tracking and/or measurement. The light source can be directed toward the eye or eyes and a camera tracks the reflection of the light source and visible ocular features such as the pupil features and/or cornea surface reflection(s). The information can then be analyzed to extract eye rotation and ultimately the direction of gaze from changes in reflections. Additional information such as blink frequency and changes in pupil diameter can also be detected by the eye tracker. The aggregated data can be stored and written to a file that is compatible with eye-tracking analysis software. Graphics can be generated to visualize such findings. Beyond the analysis of visual attention, stored eye data can be examined to measure the cognitive state or other information.

As noted previously, a camera can be located anywhere on or in the framework of the faceguard. If using a display device, such as a smart phone, the video camera can be located remotely in the device being hand held or mounted onto the faceguard. The camera control unit can be activated by such options as: an external wireless signal, a haptic unit, rapid head movement or voice activation. The control unit can also be timer actuated or triggered by an eye blink for a defined period of time.

The eye tracking and/or measuring system may include hardware such as an infrared camera and at least one infrared light source, a video tracking system and recorder. The infrared camera may be utilized by the eye tracking system to capture images of an eye of the wearer. The video images obtained by the infrared camera regarding the position of the eye of the wearer may help determine where the wearer may be looking within a field of view of the head mounted display used in the system. The infrared camera may include a visible light camera with sensing capabilities in the infrared wavelengths. Infrared light or radiation is a longer-wavelength radiation than visible light. It exists just outside of the spectrum of visible light. Heat, or thermal energy, is a common source of infrared light. An infrared camera is a device specially designed to detect and display the sources of this kind of light. A thermal infrared camera converts the heat detected into electrical signals, which are then projected in an image. Many types of night vision cameras are based on infrared light. A human body will always emit heat, and infrared cameras will detect this radiation.

The infrared light source can include one or more infrared light-emitting diodes or infrared laser diodes that may illuminate a viewing location, i.e. an eye of the wearer. Thus, one or both eyes of a wearer of the system may be illuminated by the infrared light source. The infrared light source may be positioned along an optical axis common to the infrared camera, and/or the infrared light source may be positioned elsewhere. The infrared light source may illuminate the viewing location continuously or may be turned on at discrete times.

In embodiments of the invention, the optical system can include components configured to provide images to a viewing location, i.e. an eye of the wearer. The components may include an attached display pane, a display light source, and optics, such as mirrors or refractive lenses. These components may be optically and/or electrically-coupled/connected to one another and may be configured to provide viewable images at a viewing location. One or two optical systems may be provided in the system.

Video-based eye trackers typically use the corneal reflection (the first Purkinje image) and the center of the pupil as features to track over time. A more sensitive type of eye tracker, the Dual-Purkinje eye tracker uses reflections from the front of the cornea (first Purkinje image) and the back of the lens (fourth Purkinje image) as features to track. A still more sensitive method of tracking is to image features from inside the eye, such as the retinal blood vessels, and follow these features as the eye rotates.

Eye sensors to track reference locations on the surface of one or both eyes to determine gaze-tracking locations, utilizing multiple illumination sources and/or multiple cameras to generate and observe glint/reflections from multiple directions can be used improve the accuracy of gaze tracking. One or more of the illumination sources can be comprised of infrared, near infrared or visible light, such as a micro-LED or micro-OLED projector. Eye sensors can also obtain biometric information. Eye sensors can be used to obtain anatomic structures and features of the eye, movements of the eye and eyelids, responses and reflexes of the eyes and eyelids. Eye tracking data can also be collected using a multi-camera eye gaze tracker, which is based on one-camera gaze estimation algorithm. Using an algorithm, the 3D eyeball position can be estimated by the two corneal surface reflections (or glints) of the IR lights. Each camera can estimate the gaze independently and can allow large head movement. The accuracy of this system is less than 1 degree.

Eye tracking using binocular horizontal and vertical eye position estimates can be derived from the relative positions of multiple corneal reflections and the center of the pupil. By using two eye landmarks (corneal surface reflections and pupil center) whose relative position are invariant under translation, the angular position of the eye independently of lateral motion of the video system relative to the head is able to be estimated. The optical components can be mounted on a faceguard.

In embodiments of the invention, the light source can be infrared, near infrared, and/or visible light, such as LED, can be directed toward one or both eyes. The camera can be used to track the reflection of the light source and visible ocular features such as the pupil features, cornea reflection features, iris registration features, limbus features or retinal data imaging. The collected data from the eye tracking system can be used to measure the movement features of the eyes or eyelids or rotation of the eye, acceleration/velocity of the eye movement, duration of the eyelid closure, rate of the eyelid closure and the direction of gaze. Additional information such as blink frequency and changes in pupil diameter can also be detected by the eye tracker. Aggregated eye tracker data can be written to a file for later analysis. Stored eye tracker data can be used to analyze the visual path across an interface such as a computer screen. In this case, each eye data observation is translated into a set of pixel coordinates. From there, the presence or absence of collected eye data points in different screen areas can be examined. This type of analysis is used to determine which features are seen, when a particular feature captures attention, how quickly the eye moves, what content is overlooked and virtually any other gaze-related data. Eye position is extracted from video images and graphics are often generated to visualize such findings. When using a video-based eye tracker, the camera can be focused on one or both eyes and used to record eye movement as a viewer looks at some kind of stimulus.

The camera can be mounted on the faceguard and positioned anywhere around the eye (e.g., under, above, or to the sides) or directly positioned in front of the eye, and directly in the visual field.

When using an eye-tracking camera, two general types of eye tracking techniques can be used: Bright Pupil and Dark Pupil. The difference between these eye-tracking techniques is based on the location of the illumination source with respect to the optics. If the illumination is coaxial with the optical path, then the eye acts as a retro-reflector as the light reflects off the retina creating a bright pupil effect similar to red eye. If the illumination source is offset from the optical path, then the pupil appears dark because the retro-reflection from the retina is directed away from the camera. Bright Pupil tracking creates greater iris/pupil contrast allowing for more robust eye tracking with all iris pigmentation and greatly reduces interference caused by eyelashes and other obscuring features. It also allows for tracking in lighting conditions ranging from total darkness to very bright. But bright pupil techniques are not effective for tracking outdoors as extraneous IR sources interfere with monitoring.

Embodiments of the eye tracking system can track on the cornea or further in the eye, based on using light reflected by the eye. Whether using an external source or ambient light, some of the techniques for tracking the eye include: limbus tracking, pupil tracking, Purkinje image tracking, corneal and pupil reflection relationship, corneal reflection and eye image using an artificial neural network.

Regarding limbus tracking, the limbus is the boundary between the white sclera and the dark iris of the eye. Because the sclera is (normally) white and the iris is darker,

this boundary can easily be optically detected and tracked. The limbus tracking technique is based on the position and shape of the limbus relative to the head. This means that either the head must be held still, or the apparatus must be fixed to the user's head. Due to the occasional covering of the top and bottom of the limbus by the eyelids, it is more helpful for precise horizontal tracking only.

Regarding pupil tracking, this technique is similar to limbus tracking. The difference is that in pupil tracking the smaller boundary between the pupil and the iris is used instead of the boundary between the white sclera and the dark iris. Once again, the apparatus must be held completely still in relation to the head. The advantages of this technique over limbus tracking is that the pupil is far less covered by the eyelids than the limbus, and thus vertical tracking can be accomplished in more cases. Also, the border of the pupil is often sharper than that of the limbus, which yields a higher resolution. The disadvantage pupil tracking is that the difference in contrast is lower between the pupil and iris than between the iris and sclera, thus making border detection more difficult.

Regarding Purkinje image tracking, when light (such as infrared) is shone into the user's eye, several reflections occur on the boundaries of the lens and cornea and sensed by a video camera or eye sensor. These reflections are called Purkinje images. The information is then analyzed to extract eye rotation from changes in reflections. One type of video based eye tracker uses the corneal reflection, also called the glint (the first Purkinje image) and the center of the pupil as features to track over time. A more sensitive type of eye tracker, the dual-Purkinje eye tracker, uses reflections from the front of the cornea (first Purkinje image) and the back of the lens (fourth Purkinje image) as features to track. A more sensitive method of tracking is to image features from the retina, such as retinal blood vessels and follow these retinal features as the eyes move.

Regarding pupil and pupil reflection relationship tracking, eye trackers can combine a camera with an infra-red light source that illuminates the eye with bursts of invisible infra-red light. Some of this infra-red light disappears into the pupil (the dark opening in the center of the iris), and some of it bounces back off the iris (the colored part of the eye), the cornea (the clear part at the front of the eye), the eyelid or the surrounding skin. All these different areas reflect different amounts of infra-red light, which is picked up by the camera. By analyzing the reflections using "a lot of very fancy matrix math" it is then possible to work out where the eye is pointing. Because eyes move in tandem, this only needs to be done for one eye. The technique is able to cope with blinking, head movements, dim light, glasses and contact lenses.

Regarding the use of artificial neural networks (ANNs) for computation, this is of the more recently developed techniques. The raw material for eye-gaze tracking is still a digitized video image of the user, but this technique is based on a more wide-angled image of the user, so that the entire head is in the field of view of the camera. A stationary light is placed in front of the user, and the system starts by finding the right eye of the user by searching the video image for the reflection of this light—the glint, distinguished by being a small, very bright point surrounded by a darker region. It then extracts a smaller, rectangular part of the video image (typically only 40 by 15 pixels) centered at the glint, and feeds this to an ANN. The output of the ANN is a set of display coordinates. The ANN requires more than the simple calibration that is required by the other techniques; it must be trained by gathering images of the user's eye and head for

at least three minutes while the user visually tracks a moving cursor on the display. This is followed by an automatic training session that uses the stored images lasting approximately 30 minutes using the current technology, but then the system should not require re-calibration on the next encounter. To improve the accuracy of an ANN-based system, the corneal/pupil-based calculations can be augmented with a calculation based on the position of the glint in the eye socket. The great advantage of ANN-based techniques is that due to the wide angle of the base image, user head mobility is increased.

Eye movement information from the eye tracker can be typically divided into fixations and saccades, when the eye gaze pauses in a certain position, and when it moves to another position, respectively. The resulting series of fixations and saccades can be called a scan path. Most information from the eye can be made available during a fixation, but not during a saccade. The central one or two degrees of the visual angle (the fovea) can provide the bulk of visual information; the input from larger eccentricities (the periphery) is typically less informative and analysis algorithms can be structured accordingly. Hence, the locations of fixations along a scan path show what information loci on the stimulus are processed during an eye tracking session.

Scan paths are useful for analyzing cognitive intent, interest, and salience. Other biological factors (some as simple as gender) may affect the scan path as well. As a participant looks at a page on the internet, the eye-tracking device can focus on the pupil of the participant's eye and determine the direction and concentration of the participant's gaze. Heat maps represent where the visitor concentrated their gaze and how long they gazed at a given point. Generally, a color scale moving from blue to red indicates the duration of focus. Thus, a red spot over a background area might indicate that a participant, or group of participants, focused on this part of a page for a longer time. Saccade pathways trace the eye's movement between areas of focus. The movement is not unlike watching a hummingbird move between flowers—there are periods of attention and then rapid movement. A red circle may indicate the area of focus, while a red line indicates the flight.

Another capability of the eye tracking technology is eye movement analysis, which can provide valuable insight into users' overt visual behavior and attention. The most common method for determining the location of a user's observable visual attention is by identifying the fixations and saccades that best indicate where they are focusing on the stimulus in front of them.

A linear filter may be used when processing eye-tracking data to approximate eye movement signals, at least well enough to recognize a pattern. The salient eye movements that are typically identified by eye movement analysis are fixations, saccades (overt and covert), and smooth pursuits. Fixations are a result of one's desire to maintain gaze on a specific, stationary object. Smooth pursuits are similar except for the object of interest is in motion. Saccades represent a voluntary shift of focus from one fixation point to another.

Saccades can be detected and measured by two means as well: the position variance method and the velocity detection method. The position variance method identifies saccades as those moments in the signal in which the position of the eye changes rapidly. The velocity detection method uses an empirically determined velocity threshold. If the velocity of the signal is calculated as higher than the threshold, it is a saccade. Similarly, if it is below the threshold (as discussed

above) it is a fixation. For both fixations and saccades, the velocity method is becoming more widely used because it is more suitable for real-time applications.

Beyond the analysis of visual attention, eye data can be examined to measure fatigue, the cognitive state and workload of a person. Some techniques have been validated in multiple contexts as a reliable indicator of mental effort. Driving a car, reading a magazine, surfing the internet, searching the aisles of a grocery store, playing a video game, watching a movie or looking at pictures on your mobile device are such applications of eye tracking. With very few exceptions, anything with a visual component can be eye tracked.

In embodiments of the present invention, saccades can be tested by positioning two widely spaced targets in front of the person and asking the person to look back and forth between the targets. The technology used in faceguard can be used to calculate corrective saccades. This system for the person is configured to collect eye images of the person in excess of 60 Hz and configured to resolve eye movements smaller than at least 3 degrees of motion. Eye movement data can include at least one fixation target presented to the subject in a defined position and configured to yield a voluntary saccadic eye response from at least one eye of the person. The latency, amplitude, accuracy and velocity of each respective corrective saccade and latency totals and accuracy is calculated. This platform can calculate, and display secondary, and higher, corrective saccades. Calculating corrective saccade measurements from the eye data can include:

- (a) the total number of corrective saccades associated with the subject's eye movement to each fixation;
- (b) first corrective saccade latency;
- (c) first corrective saccade amplitude;
- (d) first corrective saccade accuracy;
- (e) first corrective saccade velocity;
- (f) ratio of first corrective saccade amplitude to main saccade amplitude associated with the subject's eye movement to each fixation target; and
- (g) ratio of total of corrective saccade amplitudes to main saccade amplitude associated with the subject's eye movement to each fixation target presented to the subject.

The corrective saccade measurements can include measurements for a first corrective saccade and at least a second corrective saccade. The corrective saccade measurements for each corrective saccade can include the latency, amplitude, accuracy and velocity of each respective corrective saccade. During the initiation of a saccade, a high frame rate may be required to anticipate the landing zone of a saccade. This can be used, for example, to activate grammatical elements rapidly (i.e., without the need to even perceive the target element) and/or remove a target element from the display eliminate corrective saccades and/or allow a new target to be chosen more rapidly using the so-called "gap effect."

Dynamic visual acuity (DVA), and retinal image stability (RIS), and foveal visual stability (FVS) testing can be used to determine the condition of a person's vestibulo-ocular reflex function. A DVA assessment can also include identifying a series of images or optotypes but with the addition of a head movement along an axis at a minimum rotational rate, engaging the vestibular system. The visualized images may also be dynamically moving in any direction, and can be random in position, appearance and presentation. Specifically, the image or visual element to be identified can be seen coming from any direction, randomly or with a speci-

fied pattern of motion, and may have different shapes, features, colors, sizes, orientation, patterns, or identifying characteristics, in a specific plane of axis or in variable plane, which the person must identify while the head in motion or rotating. The person can then provide feedback regarding what they see via an on-screen gesture, keyboard, smart device (e.g., defined as an electronic device, generally connected to other devices or networks via different wireless protocols such as Bluetooth, NFC, Wi-Fi, 3G/4G/5G cellular, etc., that can operate to some extent interactively and autonomously), eye or other physical response or by voice response. The comparison of the smallest image, visual image or optotypes correctly identified or the comparison of the correct numbers of images, visual elements or optotypes in both the DVA and SVA tests can determine if the person has a defect in his or her vestibulo-ocular reflex functions.

Faceguard embodiments of the present invention can have the advantage of measuring smooth pursuit (e.g., pursuit tracking during visual pursuit) in any plane, at various frequencies and in a variety of scan paths. As an example, eye tracking and visual or smooth pursuit can be done by visually observing a moving image traditionally in a horizontal or vertical plane or alternatively in a saw-tooth, sinusoidal, square-wave, snake-like, torsional, looped or other non-fixed plane of motion, which is more natural to what the normal person experiences in everyday life. Convergence movements can be evaluated by having the person fixate on an object as it is moved slowly towards a point right between the person's eyes. Vergence is an oculomotor function, described as disconjugate movement of the eyes to track images varying in depth over the binocular visual field and is commonly affected following concussions and mTBI. Embodiments of the present invention can measure this by presenting a visual object to the subject and detecting and measuring the position of the eyes and pupil area parameter. The visual object can move linearly or in sinusoid or another scan path toward and away from the subject at 0.1-2 Hz. The responses from both eyes are analyzed and compared to determine the coordination. In addition, the eyes can be observed and measured at rest to see if there are any abnormalities such as spontaneous nystagmus, disconjugate gaze (eyes not both fixated on the same point) or skew deviation (eyes move upward (hypertropia), but in opposite directions, all resulting in diplopia (double vision).

In embodiments of the present invention, pupillometry tests can easily be observed with the technology within or attached to the faceguard. Pupil measurements can be calculated independently for each eye when visualizing an image stimulus and the responses can be compared. Pupil measurements can include: pupil diameter with visual stimulus and after stimulus, average pupil constriction velocity, average constriction latency, average pupil dilation velocity, maximum pupil constriction and dilation velocity, pupil constriction acceleration, and pupil dilation acceleration. The faceguard can allow the pupil to be measured on each side with variation of the levels of light. Both eye movement and peripheral vision testing can be measured. Eye movement testing can also be called extra-ocular muscle function testing is an examination of the function of the eye muscles. These tests observe the movement of the eyes in six specific directions. Peripheral vision testing is also called visual field testing. Testing the visual fields consists of confrontation field testing, in which each eye is tested separately to assess the extent of the peripheral field. Target detail within the peripheral field-of-view can be altered without attracting attention. In a process known as "change blindness," it is

also difficult to discern visual changes (that attract attention) if the changes are introduced slowly or at times when an observer is not looking.

In embodiments of the present invention, the technology in the faceguard can be configured to:

- (a) collect eye images in excess of 60 Hz;
- (b) resolve eye movements smaller than at least 3 degrees of motion;
- (c) measure when a stimulus is presented to only one eye of the subject or both eyes;
- (d) yield a pupil eye response from at least one eye of the person;
- (e) measure pupils in each eye independently for the person's left and right eyes; and
- (f) compare pupillometry measurements for the left and right eyes.

Another embodiment involves dynamic control of the frame rate (i.e., number of images acquired per unit of time) of the one or more cameras that view regions of one or both eyes. Camera frame rate is a major determinant of the ability to determine and measure rates and directions of movement (i.e., velocities) of objects within images of an eye. The muscles within the eye are capable of movements that are the most rapid of all muscles within the human body. Thus, increased camera frame rate can be critical in some cases to more accurately and robustly measure dynamic movements of an eye and/or its components.

Modern cameras are capable of operating over a wide range of frame rates. Instantaneous frame rates can also be adjusted (i.e., governed by so-called "clock" circuitry) as frequently as on an image-by-image basis. Closely aligned with camera frame rate is the acquisition time required to collect each image. The maximum time a camera can take to acquire an image is the inverse of the frame rate (i.e., the total time of a frame =  $1/\text{frame rate}$ ). However, modern-day digital cameras also have the ability to limit the time over which they detect photons during the image acquisition process. Limiting the time to acquire photons is known in the art as "electronic shuttering." Shuttering light (including infrared) collection times to very brief intervals (typically in the order of microseconds to milliseconds) "freezes" images, allowing a clearer view of moving objects since object edges are spread over fewer pixels. On the other hand, longer acquisition times allow the detection of more photons during each image, increasing the amplitude (i.e., intensity within each pixel) of camera images and generally increasing signal-to-noise ratios. Although micro-movements can be useful to infer some aspects of a user's state (see below), they can interfere with directional and distance measurements of smooth pursuit and voluntary saccades. Higher frame rates allow algorithmic approaches to compensate for micro-movements by removing oscillations/movements at such frequencies or other mathematical approaches such as averaging results. Brief acquisition times can also be used to reduce image blur associated with micro-movements. The key to accurately determining initial saccadic direction and speed is the acquisition of camera images at high frame rates (typically hundreds of frames per second). Several techniques are available to acquire a rapid sequence of images immediately following a saccadic launch: 1) Once a saccadic launch is detected when sampling at a lower frame rate, the camera is immediately switched to a higher frame rate. 2) Camera circuitry (only) can be constantly run at a high frame rate, storing images within a circular buffer. Not all images are transferred out of the camera buffer and processed during normal operations. When a saccade is detected, rapidly sampled images that had been stored in the

camera buffer can be retrieved for processing. 3) Frame rate can be adjusted based on the "context" of eye signal control. High frame rates can be maintained throughout these sequences.

Embodiments of the invention can use miniature video cameras. The image of the eye can be tracked and allow the person's horizontal, vertical, and/or torsional (rotary) vestibulo-ocular responses to be measured. A moving visual target or visual element can provide a method for tracking, for optokinetic (OPK) testing, for saccade detection and measurement, for gaze fixation testing, for DVA measurement and for VOR testing. In the Active Head Rotation (AHR) horizontal test, the subject moves their head left and right randomly to the auditory signal and visual presentation. The speed of the signals increases through 1 Hz up to a maximum of at least 5-6 Hz. The person will attempt to keep moving the head back and forth at the speed of the cueing provided. For AHR Vertical, this test is conducted in the same manner as the horizontal test above, except that the head motion is up and down rather than left and right.

In further embodiments, the faceguard can include at least one, and typically two, digital camera(s) trained on the person's eyes and which the camera can have auto-tracking. Each camera can be connected to and/or powered by a computer, such as through a "firewire" type connection. The computer may be a laptop portable computer or other digital device. The digital cameras may allow for digital centering of the person's pupil at least in one direction through concentrating on the region of interest, and can be in multiple directions. The use of digital centering eliminates the need for a mechanical adjustment mechanism in the given direction.

In another embodiment, the eye sensor can be further configured to capture a 3D image of the iris. In another embodiment, the eye sensor can be comprised of an array of transparent light detectors based on graphene. In another embodiment, the system can include an illuminator that is configured to provide illumination in a visible, LED or infrared light spectral band for the eye sensor to capture the 3D image of the iris. In further embodiments, the eye sensor can be a microlens array light field camera (LFC) or plenoptic camera.

In embodiments of the present invention, eye movements, responses or reflexes and head movements can be detected and measured in a manner that is novel and unique compared to what has been done traditionally in the clinical laboratory. These faceguard embodiments enable a higher level of testing and measurement for these eye responses, particularly for the VOR, pursuit tracking, vergence, pupillometry and DVA. Embodiments of the present invention also provide unique methods to rehabilitate persons with vestibular system disorders, particularly those with peripheral vestibular disorders and especially those persons with vestibulo-ocular reflex abnormalities and/or abnormalities of the dynamic visual acuity.

In another embodiment, the images or visual elements presented for VOP tests (which can include DVA or other oculomotor measurements) can correspond to a plurality of depth planes provided to a viewer in the faceguard display. The target image or visualized element may be different for each depth plane, which can provide a slightly different presentation of a scene or object. The target or visual element may be separately focused by each of the viewer's eyes, to provide depth cues based on the accommodation of the eye required to bring into focus different image features for the scene located on different depth plane and/or based on observing different image features on different depth



planes being out of focus. These depth cues can provide credible perceptions of depth and add complexity to the testing and measurement.

#### Head Tracking

Head tracking on a faceguard can be performed by using an inertial measurement unit (also called an IMU or 'tracker'). An IMU is an electronic device that measures one or more DOF (such as position, velocity, orientation, and/or gravitational force, as was described previously in this disclosure) by using one or more sensors. Sensors used in IMUs can include one or more accelerometers, gyroscopes, and magnetometers. A MEMS (micro electro mechanical system) gyroscope, a MEMS accelerometer, and a MEMS magnetometer can be used as complementary and/or redundant sensors to accurately support a full range of motion in a three-dimensional space. Accelerometers work well for measuring five DOF: linear movements in three axes; and absolute tilt about the two axes perpendicular to gravity (i.e. pitch and roll). Accelerometers cannot easily measure rotation about an axis aligned with gravity (i.e. yaw). Magnetometers work well for measuring absolute yaw providing a sixth DOF. Gyroscopes provide a stable way to measure changes the three rotational DOF (pitch, roll, and yaw). Devices that measure these three displacements and measure each of the three rotations in two different ways are typically called nine DOF IMUs. The input signals from the accelerometer(s), magnetometer(s), and gyroscope(s) in these nine DOF IMUS are often processed using a Kalman or a Madgwick filter located in a sensor pre-processing unit to provide output signals that have been optimized for accuracy, stability, and response rate.

The head tracking inertial system can be mounted in numerous configurations. Examples include: within a face guard or attached to a faceguard

#### Fourier Analysis

A Fourier transform can be used to convert the relationship between an input (such as head motion) and an output (such as eye movement) in the time domain to a relationship in the frequency domain. By doing this, VOP can be measured for natural motion in a non-clinical environment. As described previously, one of the traditional ways of measuring VOR has been to oscillate a subject's head at a fixed frequency and then to measure how quickly the eyes respond. For this kind of testing, a frequency of 0.5 Hertz would correspond to one cycle every 2 seconds. A cycle corresponds to the combination of one movement to the right and one movement to the left. These movements are typically in the form of a sine wave. The gain at this frequency would be the amount of compensation that the eyes make to the movement of the head. A gain of -1 (also often written as a gain of 1) is perfect because the eyes have rotated exactly the same angle as the head, but in the opposite direction. A gain of -0.75 (often written as 0.75) means that the eyes only compensated for 75% of the head rotation. The phase or phase lag describes how much later the eyes moved than the head. A phase or phase lag of 0 would mean the eyes followed exactly. A phase or phase lag of 45 degrees at a frequency of 0.5 Hertz means that the eyes were delayed by  $\frac{1}{8}^{th}$  of 2 seconds (or 250 milliseconds) because 45 degrees corresponds to  $\frac{1}{8}^{th}$  of a full 360-degree cycle. To determine gain and phase at a variety of frequencies using the traditional approach of oscillating the head in a clinical environment one would repeat the above test at a variety of frequencies and record the results. This method requires control over each input frequency and measuring

the gain and phase of the eye response separately for each frequency, which will not work in a non-clinical setting having natural motion.

Any time-varying signal (such as the natural motion of an object in one dimension) can be converted to a series of sine waves. This conversion from a time-varying signal to a series of sine waves is called a Fourier transform. Fourier transforms can be discrete or continuous. A continuous Fourier transform is one in which the time-varying signal is converted to an entire range of frequencies with no gaps between the frequencies. A discrete Fourier transform is one in which the time-varying signal is converted to a specific set of frequencies, such as the series 0.125 Hz, 0.25 Hz, 0.5 Hz, 1.0 Hz, and 2.0 Hz. Discrete Fourier transforms are easier to calculate using digital electronics. By converting the observed natural yaw of the head as a function of time using a Fourier transform, one can generate a graph showing the amplitude of the input signal that the eyes would need to compensate for in order to follow a stationary image or visual element. By converting the sensed horizontal movement of the eyes at this same time using a Fourier transform, one can generate a second graph showing the amplitude of the eye signal that compensates for the head movement. By comparing these two graphs mathematically, it is possible to determine gain at various frequencies directly from the natural head yaw movement. Similar mathematical calculations can be made to determine phase. The same method can be used to determine gain and phase in other dimensions such as pitch of the head versus the sensed vertical movement of the eyes, etc. Discrete Fourier transform calculations of this type can be performed by a microprocessor that receives the time-varying orientation signals from a head orientation sensor and the time-varying signals from an eye orientation sensor using mathematical calculations capable of being understood by anyone skilled in the art.

It should be noted that embodiments of the present invention can be implemented using dynamic analysis tools other than or in addition to Fourier Transform analysis, examples of which can include regression analysis, multi-variable regression, band pass filters, time domain analysis, Bode plots, Nyquist plots, waterfall diagrams, Campbell diagrams, resonance analysis, power spectral density analysis, frequency response function, coherence analysis, correlation analysis, cross power spectrum analysis, impulse response analysis, octave analysis, order analysis, waveform analysis, and/or any other dynamic system analysis tool capable of being understood by those skilled in the art.

#### Other Potential System Elements

In one embodiment, the faceguard can include eye tracking and measuring, head tracking, a power supply, a microprocessor, a memory, and a user interface. Components of the system can be configured to work in an interconnected fashion with each other and/or with other components coupled to respective systems. For example, the power supply can provide power to all the components of the system. The processor can receive information from and control the eye tracking system; the head mounted tracking system and any peripherals.

The system may include or be coupled to peripherals, such as a wireless communication interface, a touchpad, an integrated microphone, a high definition (HD) camera, and a speaker. A wireless communication interface may use 3G cellular communications, such as CDMA, EVDO, GSM/GPRS, or 4G cellular communications, such as WiMAX or LTE. Alternatively, wireless communication interface may communicate with a wireless local area network (WLAN), for example, using Wi-Fi. In some examples, wireless com-

41

munication interface may communicate directly with a device, for example, using an infrared link, Bluetooth, near field communication, or ZigBee. In addition, other wireless interface communication can be used with “off-the-grid” networks (such as FireChat) where there is not cellular phone service or no internet connection.

The power supply may provide power to various components in the system and may include, for example, a rechargeable lithium-ion battery, solar power, mechanical power or various other power supply materials and types known in the art.

The processor may execute instructions stored in a non-transitory computer readable medium, such as the memory, to control functions of the system. Thus, the processor in combination with instructions stored in the memory may function as a controller of the system. For example, the processor may control the wireless communication interface and various other components of the system. In other examples, the processor may include a plurality of computing devices that may serve to control individual components or subsystems of the system. The processor, in conjunction with the memory unit, may perform analysis of the images obtained by the infrared camera.

In addition, the memory unit may store data that may include a set of calibrated wearer eye pupil positions and a collection of past eye pupil positions. Thus, the memory may function as a database of information related to gaze direction. Calibrated wearer eye pupil positions may include, for instance, information regarding extents or range of an eye pupil movement (right/left and upwards/downwards), and relative position of eyes of the wearer. For example, a relative position of a center and to one side with respect to a gaze direction or a gaze angle of the eye pupil of the wearer may be stored. Also, locations or coordinates of starting and ending points, or waypoints, of a path of a moving object displayed, or of a static path (e.g., semicircle, Z-shape etc.) may be stored on the memory unit.

The system may include the user interface for providing information to the wearer or receiving input from the wearer. The user interface may be associated with displayed images, a touchpad, a keypad, multiple cameras, buttons, a microphone, a haptic device, and/or other peripheral input devices. The processor may control functions of the system based on input received through the user interface. The system and/or testing function controls and input connections can be in the faceguard and/or in a remote device. The system can be activated or controlled using an electronic keypad, voice, haptic, eyelid movement, ocular orientation, and/or any body movement. The computing system could be a distributed computing system. The computing system could comprise cloud computing.

One or more of the described functions or components of the system may be divided up into additional functional or physical components, or combined into fewer functional or physical components. For example, the infrared camera may be mounted on the wearer separate from the system. Thus, the system may be part of a portable/wearable computing device in the form of separate devices that can be worn on or carried by the wearer. Separate components that make up the wearable computing device may be communicatively coupled in either a wired or a wireless fashion. In some further examples, additional functional and/or physical components may be added.

The system may be further configured to display images or visual elements to both eyes of the wearer. Alternatively, the system may display images or elements to only one eye,

42

either a left eye or a right eye. [We please check that this is somewhere else or move it somewhere else.]

The system may include a gyroscope, a global positioning system (GPS), magnetometer, and an accelerometer. The faceguard can be configured to provide information associated with a position and an orientation of the faceguard to the processor. The gyroscope may include a micro-electro-mechanical system (MEMS) gyroscope or a fiber optic gyroscope as examples. The gyroscope may be configured to provide orientation information to the processor. The GPS unit can include a receiver that obtains clock and other signals from GPS satellites. The GPS unit can be configured to provide real-time location information to the processor. The faceguard can further include an accelerometer configured to provide motion input data to the processor.

#### Additional Embodiments

In one embodiment, the device or method uses utilizes a faceguard with an eye-tracking and measuring sensor, a head motion sensor and compares the gain and phase of each (e.g., an electronic circuit generates a comparison of the three axes from the head orientation sensing element with eye movement signals from the eye sensor to calculate a gain and phase of the eye movement response to head rotation, in the opposite direction). The eye orientation sensor senses vertical movement and horizontal movement of at least one eye.

The face guard can measure the relationship between motion of the head in this environment and VOP. The data acquired can be uploaded to a remote position from the user for display and interpretation or transmitted wirelessly to a smart phone, wearable display device or other hand-held device, or another computer source. Under normal circumstances, when measuring the VOR and the user is looking at a visual element, the head turns in one direction and the eyes reflexively move in the opposite direction to maintain fixation on the visual element. The eye movement lags behind the head movement by 10 ms or less. Eye movement responses longer than this would be abnormal. The head orientation sensor can sense pitch and yaw of the person's head in a range of frequencies that comprises at least one frequency greater than 0.01 Hertz and less than 15 Hertz. The head orientation sensor can comprise an IMU. The head orientation sensor can comprise one or more accelerometer(s), magnetometer(s), and/or gyroscopes.

In one embodiment, a single camera system is used for the eye tracking. In another embodiment, a multi-camera system is used and the cameras can be located in the lens, framework or eye or head worn device or located remotely. The camera control unit could be activated by touch, by head movement, by voice, by a timer, and/or by an external wireless signal. An eye blink, for a defined time, could also trigger the camera. An algorithm measuring blinking time and duration to discriminate between voluntary and involuntary eye blinks could be used to issue a command to a controller to operate the camera system. The controller could communicate with other parts of the system to support the commands. The camera could have a resolution of at least five megapixels and could be capable of recording at 720p or 1080p resolutions. The camera could have a microphone for voice commands, and at least 12 GB of usable storage. The camera could support Bluetooth and/or Wi-Fi. The camera could be part of, or work with an Android or iOS smartphone. The camera could have at least a 25° field of view. The camera system could also comprise an onboard OMAP (Open Multimedia Applications Platform) processor

running the Android or iOS operating system. The entire camera system could be a smartphone mounted or attached to a faceguard, that includes an embedded eye camera sensor with a head motion sensor. Providing direct image overlay over the wearer's main line-of-sight, coupled with the motion sensors and camera, it can enable true augmented reality capability. A smartphone or similar device (such as a tablet computer) could also be used to provide wireless remote control.

In one embodiment, the eye-tracker uses the center of the pupil and infrared and/or near-infrared non-collimated light to create corneal reflections (CR). The vector between the pupil center and the corneal reflections can be used to compute the point of regard on surface or the gaze direction.

In an alternative embodiment of a binocular system, two mirror-image optical systems are mounted on each side of the faceguard frame. The corneal reflections are generated by illumination with two infrared LED's mounted to the faceguard frame. These LED's also serve to illuminate the pupil. The use of infrared (IR) light allows for invisible illumination of the eye. The use of multiple corneal reflections extends the linear range of the system by ensuring that one corneal reflection is always visible on the spherical surface of the cornea even with eccentric gaze. The images of the pupil and corneal reflections are reflected off of an IR mirror positioned in front of the subject's eye and directed to the cameras. This mirror is transparent to visible light and thus does not interfere with normal vision. The video image is sampled by a custom charge-coupled device (CCD) array that allows images to be sampled minimally at 20 Hz. Images from the CCD camera are processed in real time to obtain estimates of the corneal reflection and pupil center locations. Calibration of the eye tracker can be performed using a light source, such as a laser pointer, or other detailed natural object and calibration procedure looking at multiple objects or points.

Testing of the VOR can also be tested with pitch and roll of the head tilt. Predictive tracking (e.g., algorithm which can predict the next head position and orientation can help computing and updating) can be used to prevent latency issues and lessen motion disturbances while being tested. A bone conducting sensor incorporated in the framework can provide auditory/acoustic signals to the user. This data can then be stored, logged, interpreted and uploaded to a remote location. The eye tracking system can be used with or without a light source.

Trackers can constantly ping the sensors in the IMU to get information from them. The rate at which this happens is expressed as [samples] Hz (per second). The wearer of a head tracker may perform a gesture to indicate an attempt to unlock the head mounted camera display. For example, a gyroscope coupled to the faceguard may detect a head tilt, for example, and indicate that the wearer may be attempting to unlock the head mounted display screen.

In one embodiment the head tracker comprises an IMU, a battery and wireless interface charger, a wireless interfaced micro-controller, and a transceiver. The gyroscope in the IMU can be capable of sampling rates up to 760 Hz, and the transmitter link can have the throughput to transmit that fully under 1 ms latency to the remote station. Full positional updates (fused information from all the sensors) from the IMU can be sent at a rate of at least 500 Hz. The IMU comprises sensors that can sense roll, pitch, and yaw, as well as inertia when the IMU is moved forward/back, left/right, and up/down. The IMU could be a nine DOF IMU.

The mounted head tracker sensor in the head worn/eye worn device can include an IMU of any type cable of being

understood by anyone skilled in the art. The mounting of the head tracker can be located anywhere to the faceguard and in any manner to the faceguard.

Another alternative embodiment of the invention is an inertial angular orientation tracking apparatus mounted to the faceguard. Drift sensitive sensors, such as angular rate sensors, produce a signal that is integrated to give a signal that represents angular position. The angular position signal may drift, due to integration of a bias or noise in the output of the rate sensors. To correct this drift, compensating sensors, such as gravimetric tilt sensors and geomagnetic heading sensor(s) can periodically measure the angular position, and this directly measured position signal is used to correct the drift of the integrated position signal. The direct angular position sensors cannot be used alone for dynamic applications because the gravitational sensors are also affected by non-gravitational accelerations, and therefore only accurately reflect angular position when under the influence of no non-gravitational accelerations. Typically, the drift sensitive sensors are angular rate sensors, (these include: rate gyroscopes and vibrating piezoelectric, magneto-hydrodynamic, optical and micro-machined silicon devices) the outputs from which are integrated once. However, other suitable drift sensitive sensors include linear accelerometers used to sense angular rate, gyroscopic angular position sensors and angular accelerometers. Typically, the compensating sensors are inclinometers, accelerometers and compasses.

In another embodiment, the device can include a position tracker such as an acoustic position tracker, a system that tracks LEDs or IR position, optical sensors or reflective marks, a video machine-vision device, sensors integrated in the faceguard or a radio frequency position locating device.

In an alternative embodiment, the present invention not only measures VOP (as the VOR or RIS with head movement), but also rehabilitates/retrains the user when an abnormality is present, to enhance the VOR and RIS or retinal visual accuracy with specific visual stimulation and head movements. This rehabilitation can be done for specific vestibulo-ocular pathologic findings. Specifically, when there is an abnormal VOR in the horizontal plane, specific algorithms of eye fixation on a target object, while the head is moving horizontally can be used to rehabilitate the abnormality. When the abnormal VOR is seen in the vertical plane, specific algorithms of eye fixation on a target object, while the head is moving in a vertical manner can be used to rehabilitate the abnormality. As the VOR is enhanced or improved, the DVA or RIS will be enhanced.

In one embodiment, the device or method could provide a sound signal and/or visual signal to alert or trigger the user to respond by moving the eye or head. Remote sensing, see through capability with the head/eye worn device, and the rendering of a visible target in broad daylight are all features that can be incorporated in embodiments of the present technology. The faceguard or method could also collect the data, which could then be uploaded to a medical doctor, trainer, coach or other person at a remote location. This remote location could then provide verbal or visual feedback to the user and this feedback could be integrated with other information provided to the user.

In one embodiment the device or method disclosed here can also be used to help a person improve his or her VOR and DVS and accuracy used during activities in daily living, routine exercise, and high level athletic/vocational activities. This can be used to help a person improve his or her balance by challenging, exercising, enhancing, and/or retraining the VOR (fixation/re-fixation) used during activities in daily

living, routine exercise, and high level athletic/vocational activities and therefore improving the retinal visual stability and accuracy of the fovea to remain fixed on the visual element. Thus, embodiments of the present invention can incorporate head movements in one or a number of planes as part of a systematic program for enhancing the VOR and DVA. Using the faceguard and methods described here it is possible for rehabilitation programs to incorporate head movement with stable image identification and image identification movement with the head remaining stable. The data obtained from the devices and methods described here can be used for wireless communications. The data can be embedded GIS or geographic information system of the eyes or a digital map of where the eyes are located relative to the head movement.

In one embodiment, the device can be calibrated before it is used. When used in the laboratory setting, calibration can be performed by focusing on a distant target, such as a light bar or laser light which is projected to the wall. The image or visual element moves horizontally, vertically and then is center located. Typically, several trials are performed to establish reproducible results. During this test, the person is instructed to rotate the head from side to side horizontally or vertically to an auditory cue at frequencies ranging from 2 to 6 Hz. Eye movements are recorded including: direction, amplitude, and velocity of eye movements. Head inertial movements are recorded by the velocity rate sensor attached to the head. Tracking eye movement from spot to spot in this way is called "active tracking". When used in a non-laboratory or a non-clinical setting, similar testing can be performed if there are objects available to serve the same purpose as the distant target in the laboratory setting. Testing of this type allows gain, phase, and asymmetry to be measured separately at each frequency. A more sophisticated approach would be to ask the subject to follow an object that is not necessarily moving at one specific frequency, but at a combination of frequencies and then using a Fourier transform to convolve the gain, phase, and asymmetry at various frequencies directly from the complex waveform that was being followed by the subject.

As described in the previous paragraph, in some embodiments of the present invention, the head movement tracked and measured can be active. Another approach is to use and measure natural movement that normally occurs during normal activities or activities associated with a person's work and to compare that to the eye movement that occurs at the same time using a Fourier transform. This approach can be called "natural tracking." A third approach is to attach the head to something that then forces the head to move in a specific pattern—which is called "passive tracking."

In embodiments of the present invention, head movement testing can sense horizontal, vertical or torsional movements at various linear velocities, angular velocities, linear accelerations, angular accelerations, or frequencies. Natural test method testing in the horizontal plane could utilize focusing on a target moving across the horizontal visual field. Watching a moving object ascend and descend in the air can serve as a natural vertical test.

Any combination of the discussed embodiments of head inertial trackers and eye tracking systems can be used to measure the ocular response (e.g., VOR) with head movement. If active tracking is used, the user visualizes a target of interest while moving the head. As the head moves, the ocular responses can be tracked and measured by a variety of modalities. A Fourier transform or other method of analysis can be used to compare the inertial head movement and eye movement response at various frequencies in a

complex waveform and software can analyze the data. The stored data can be displayed remotely and abnormalities of the related ocular response to the head movement can then predict the performance of the user when performing an occupational activity.

In the prior art, clinicians have looked at the VOR response and made a binary judgment (e.g., the VOR was abnormal or normal). This normal/abnormal criterion would then be used to determine whether vestibular rehabilitation was needed. A better method for evaluating the VOR response would be to measure vestibulo-ocular performance on a continuous scale, just like we measure the speed of an athlete. By doing this, one can get a subject's human performance measurement. Specifically, there can be a VOR response score that more clearly establishes the vestibulo-ocular response measurement and expresses this response measurement in language that can more appropriately be applied to human performance measurement and improvement. Establishing such a scoring system will enable people to more accurately predict human performance with specific activities. It may also help in the development of activities that improve the human performance in fields where above average VOP is of benefit. The same use of scoring on a continuous scale and multi-frequency composite scoring can apply to DVA, DVS and RIS.

#### Areas of Application

Embodiments of the systems and methods described herein could be used in a variety of areas, including but not limited to the military, sports, medical, and commercial businesses. In the tests described herein, all oculomotor responses can be measured in a faceguard. Eye features and movements, as well as eyelid, and head movements can be tracked. Eye movement, eye position, visual acuity, pupil function, peripheral and central vision can all be easily measured with this technology in the faceguard. These eye parameters can be correlated with movement of the extremities to assess hand eye coordination. The faceguard can be attached to a helmet used for football, lacrosse, hockey, horse-back riding, cycling, motor-cross, whitewater, climbing, baseball, and/or any combination of these sports. The faceguard can also be attached to helmets, used in construction or industrial applications and/or helmets used by security and/or military forces.

#### Sports.

Embodiments of the present invention, using ocular performance measurements, can be used in sports/athletic environments where ocular parameter measurement can help predict player performance, player fatigue and early detection of abnormalities such as concussions and traumatic brain injury. For example, if a player has an abnormal VOR/DVA in the horizontal plane, that person may not be able to catch a ball when competing in athletic activities that require the head to rotate in a horizontal plane. Similarly, if a player has a vertical VOR/DVA abnormality and is running downfield while looking upwards over the shoulder, the ball will not be in focus. Specifically, the retinal visual stability and accuracy would be diminished. In this instance, there would be a higher likelihood of dropping the ball compared to another athlete who has normal VOR responses with normal DVA. If a VOR abnormality was determined to be present prior to play, which could result in difficulty with foveal fixation, and athlete could undergo VOR retraining to rectify the abnormality and therefore improve play performance. Alternatively, the coaching staff could select another athlete who did not have this abnormality. For example, on game day if a football player had an abnormal VOR, with resultant decline in the DVA, in the vertical plane (e.g., lack of visual

fixation on an object of interest with upwards and downwards movement of the head), then it can be predicted that the athlete is predictable not likely to catch a ball while running downfield and looking upwards over the shoulder (e.g., you cannot catch, what you cannot accurately see). This would offer some value to the coaching staff in selecting plays for the player or players for the necessary play to be performed. Additionally, if an athlete had such an abnormality and could be given some rehabilitation methods prior to play, this could correct the abnormality and increase performance in that activity. Athletes who have had concussions or TBI can have a VOP abnormality, with resultant decrements in the VOR, DVA, or RIS. Embodiments of the present invention can be an accurate method to determine when the athlete is ready to return to play activities, based on improvement of the VOR or DVA. It therefore can be utilized in TBI/concussion evaluation/assessment and management for return to play. It is also intended for athletes who wish to enhance their training and athletic/vocational performance. It can be used in fitness centers, sports training centers, athletic performance centers, and vocational performance centers. Some ocular performance measurements, including VOR, can also be adversely affected by alcohol and drug use. Potential use of this testing can also provide a drug screen for those individuals suspected of having suboptimal performance. Playing at higher performance levels demands excellent eye fixation on the visual target of interest while they are in motion. If athletes wanted to perform at a higher level, it could change the culture of adverse behavior activities, knowing that these activities would have a negative effect on their performance by having poor visual fixation while doing the activity they enjoy.

Military personnel functioning in a high-level environment and requiring target fixation of their eyes, while performing other activities such as with head or body movement, require a normal VOR and normal DVA. If the VOR/DVA is abnormal, the individual will not demonstrate peak human performance. Embodiments of the present invention can be used by the military in places such as the pilot selection process or special operations community to aid in the selection of individuals without a VOR/DVA abnormality. VOP measurement could enable other individuals, who had normal foveal fixation ability to be chosen for a particular task that has better predictable performance for a particular duty of the day. Like that discussed above with athletes, ocular performance measurements, including visual pursuit tracking and VOR, can be adversely affected by alcohol and drug use. This testing can provide evidence of military personnel suspected of having potential of suboptimal performance before performing specific duties requiring high performance with eye fixation.

#### Medical.

Similarly, any person with a motion sensitivity disorder (such as motion sickness, vection induced motion sickness, or visually induced motion sickness) or a balance problem, either of a central or peripheral origin, will have a VOR/DVA abnormality. Individuals with such an abnormality will express symptoms of dizziness, disorientation, difficulty with focusing, nausea, fuzziness, and such other complaints as not being clear headed. Embodiments of the present invention can be useful to people who have experienced a vestibular insult, vestibular dysfunction or labyrinthine dysfunction such as those caused by infection, concussive injury, traumatic brain injury, vascular disease, ototoxic or vestibulotoxic medication use, surgical complications, Meniere's disease, people experiencing chronic imbalance, such as, but not limited to, stroke victims, people with

systemic illnesses, the elderly and other people who have experienced head injuries, especially those who have experienced cerebral or labyrinthine (inner ear) concussions. It also can be utilized other centers which perform vestibular rehabilitation and athletic/vocational enhancement environments. This ocular performance measurement method using a faceguard, can be used as an objective tool for assisting in the diagnosis of traumatic brain injury (TBI), concussion and other degenerative cerebellar disorders that cause highly abnormal results.

#### Vestibular Rehabilitation.

VOR scoring can also be beneficial in determining who is likely to benefit with vestibular rehabilitation therapy. VOR scoring can also be used more objectively in determining the benefit or improvement with such therapy. The system can include improvement information that can be used by the user, a coach, a medical practitioner, or any other advisor to help interpret the scoring and provide advice and/or exercises to improve ocular reflex. Although vestibular rehabilitation therapy can improve the ocular responses, this scoring can accurately quantify the improvement and more ably predict who is able to return to their normal activity without loss of human performance. Having a VOP score can also provide feedback that helps to control abnormal VOR responses. When an ocular response is abnormal with head rotation (a VOR abnormality, for example), such a finding can also determine a need for improvement with rehabilitation. Repetitive head movement in the abnormal plane of rotation, while the eye remains fixed on a target of interest, can provide a means for improving or enhancing the VOR or other eye responses. Specifically, if a VOR abnormality is found to exist in the horizontal plane, VOR enhancement rehabilitation therapy is given in the same plane. In this instance, the user focuses on a target of interest and the user rotates the head horizontally, while continuing to look at the target. If a VOR abnormality is found to exist in the vertical plane, VOR enhancement rehabilitation therapy is also given in the similar plane of the abnormality. In this instance, the user focuses on a target of interest and the user rotates the head vertically, while continuing to look at the target. The head speed can be varied and the target, which the user is focused, can be changed. The process can be repeated as often as necessary until the VOR abnormality is corrected. This therapy can be performed in any plane where such an abnormality exists. The same use of scoring on a continuous scale and multi-frequency composite scoring can apply to DVA, DVS and RIS.

Embodiments of the inventions described herein can provide supernormal enhancement of these same systems where no balance disorder exists, as in the case for enhancement of athletic and vocational abilities. Embodiments can enable individuals to reach a higher level of performance in their occupation, enable them to have increased ocular performance functions when participating in their usual occupational or play activities as well as enabling cognitive training and rehabilitation. Such an enhancement methodology can be used in athletic/vocational enhancement or training.

Although the invention herein has been described with reference to particular embodiments, it is to be understood that these embodiments are merely illustrative of the principles and applications of the present invention. For example, the present invention may be used to protect workers in an industrial setting, at a construction site, etc. In order to accomplish this, the device of the present invention may, for example, be attached to construction helmets. It is therefore to be understood that numerous modifications may

be made to the illustrative embodiments and that other arrangements may be devised without departing from the spirit and scope of the present invention as defined by the appended claims.

A number of variations and modifications of the disclosed 5  
embodiments can also be used. The principles described here can also be used for applications other than sports. While the principles of the disclosure have been described above in connection with specific apparatuses and methods, it is to be clearly understood that this description is made 10  
only by way of example and not as limitation on the scope of the disclosure.

What is claimed is:

1. A faceguard wherein:

the faceguard is configured for attachment in front of the 15  
face of a human;

the faceguard is configured for measuring a human ocular performance characteristic selected from the group of:  
vestibulo-ocular reflex;

ocular saccades;

pupillometry; 20

pursuit tracking during visual pursuit;

vergence;

eye closure;

focused position of the eyes;

dynamic visual acuity; 25

kinetic visual acuity;

retinal image stability;

foveal fixation stability; and

nystagmus; and 30

the faceguard further comprises:

a plurality of structural members;

at least one aperture configured for human vision through the faceguard;

an eye sensor wherein:

the eye sensor comprises a video camera; and

the eye sensor senses eye information selected from the group of:

horizontal eye movement;

vertical eye movement; 40

pupil size; and

eyelid movement;

a head orientation sensor wherein:

the head orientation sensor senses a head movement selected from the group of pitch and yaw of a 45  
person's head wherein pitch represents a rotation about a first axis representing up and down movement of the person's face when the rear of the person's head moves in the opposite direction and

yaw represents horizontal movement of the face 50  
when looked at from the front about a second axis substantially aligned with the spine and perpendicular to the first axis; and

the head orientation sensor senses the head movement in a range of frequencies between 0.01 Hertz 55  
and 15 Hertz;

the head orientation sensor comprises a micro-electro-mechanical system integrated circuit comprising a module selected from the group consisting of an accelerometer, a magnetometer, and a gyro- 60  
scope; and

an electronic circuit wherein:

the electronic circuit comprises a central processing unit, and a memory unit;

the electronic circuit is responsive to the eye movement information received from the eye 65  
sensor; and

the electronic circuit is responsive to head movement information received from the head orientation sensor.

2. The faceguard of claim 1 wherein:

the faceguard is configured for measuring vestibulo-ocular reflex.

3. The faceguard of claim 1 wherein:

the faceguard is configured for measuring ocular saccades.

4. The faceguard of claim 1 wherein:

the faceguard is configured for measuring pupillometry.

5. The faceguard of claim 1 wherein:

the faceguard is configured for measuring pursuit tracking during visual pursuit.

6. The faceguard of claim 1 wherein:

the faceguard is configured for measuring vergence.

7. The faceguard of claim 1 wherein:

the faceguard is configured for measuring eye closure.

8. The faceguard of claim 1 wherein:

the faceguard is configured for measuring focused position of the eyes.

9. The faceguard of claim 1 wherein:

the faceguard is further configured for measuring an ocular performance characteristic selected from the group of dynamic visual acuity and kinetic visual acuity.

10. The faceguard of claim 1 wherein:

the faceguard is configured for measuring retinal image stability.

11. The faceguard of claim 1 wherein:

the faceguard is further configured for measuring an ocular performance characteristic selected from the group of foveal fixation stability and nystagmus.

12. The faceguard of claim 1 wherein:

the eye sensor senses horizontal eye movement and vertical eye movement.

13. The faceguard of claim 1 wherein:

the eye sensor senses eye movement information selected from the group of horizontal eye movement and vertical eye movement.

14. The faceguard of claim 1 wherein:

the head orientation sensor senses pitch of the person's head and yaw of the person's head

the eye sensor senses eye horizontal eye movement and vertical eye movement;

the electronic circuit uses a Fourier transform to generate a vertical gain signal and a vertical phase signal in response to the vertical eye movement information and the pitch information; and

the electronic circuit uses a Fourier transform to generate a horizontal gain signal and a horizontal phase signal in response to the horizontal eye movement information and the yaw information.

15. The faceguard of claim 1 wherein:

the eye sensor further senses the position of at least one eye;

the faceguard further comprises a forward-facing camera; and

the forward-facing camera is responsive to the eye sensor.

16. A human ocular performance measuring system wherein:

the system is configured for measuring an ocular performance characteristic selected from the group of:  
vestibulo-ocular reflex;

ocular saccades;

pupillometry;

pursuit tracking during visual pursuit;

51

vergence;  
 eye closure;  
 focused position of the eyes;  
 dynamic visual acuity;  
 kinetic visual acuity;  
 retinal image stability;  
 foveal fixation stability; and  
 nystagmus; and  
 the system comprises:  
 an eye sensor wherein:  
   the eye sensor is located on a faceguard wherein the  
     faceguard comprises a plurality of structural mem-  
     bers and at least one aperture configured for  
     human vision through the faceguard;  
   the eye sensor comprises a video camera; and  
   the eye sensor senses eye movement information  
     selected from the group of:  
     horizontal eye movement;  
     vertical eye movement;  
     pupillometry; and  
     eyelid movement;  
 a head orientation sensor wherein:  
   the head orientation sensor is located on the face-  
   guard;  
   the head orientation sensor senses a head movement  
     selected from the group of pitch and yaw of a  
     person's head wherein pitch represents a rotation  
     about a first axis representing up and down move-  
     ment of the person's face when the rear of the  
     person's head moves in the opposite direction and  
     yaw represents horizontal movement of the face  
     when looked at from the front about a second axis  
     substantially aligned with the spine and perpen-  
     dicular to the first axis; and  
   the head orientation sensor senses the head move-  
     ment in a range of frequencies between 0.01 Hertz  
     and 15 Hertz; and  
 an electronic circuit wherein:  
   the electronic circuit comprises a central processing  
   unit, and a memory unit;  
   the electronic circuit is responsive to the eye move-  
   ment information received from the eye sensor;  
   and  
   the electronic circuit is responsive to head movement  
   information received from the head orientation  
   sensor.

17. The system of claim 16 wherein:  
 the head orientation sensor comprises a head-worn micro-  
 electro-mechanical system integrated circuit compris-  
 ing a module selected from the group consisting of an  
 accelerometer, a magnetometer, and a gyroscope.

18. The system of claim 16 wherein:  
 the faceguard is configured for attachment to a football  
 helmet; and

52

the system is configured for determining whether a con-  
 cussion has occurred.

19. The system of claim 16 wherein:

the head orientation sensor comprises the same video  
 camera as the eye sensor.

20. A method for measuring human ocular performance  
 comprising the steps of:

establishing a faceguard that comprises:

a plurality of structural members and at least one  
 aperture configured for allowing human vision  
 through the faceguard;

an eye sensor comprising a video camera configured for  
 sensing

eye movement information selected from the group  
 of:

horizontal eye movement;

vertical eye movement;

pupillometry; and

eyelid movement;

a head orientation sensor configured for sensing a head  
 movement selected from the group of pitch and yaw  
 of a person's head wherein pitch represents a rotation  
 about a first axis representing up and down move-  
 ment of the person's face when the rear of the  
 person's head moves in the opposite direction and  
 yaw represents horizontal movement of the face  
 when looked at from the front about a second axis  
 substantially aligned with the spine and perpendicu-  
 lar to the first axis; and

an electronic circuit; and

using the electronic circuit to:

receive eye movement information from the eye sensor;

receive head movement information from the head  
 orientation sensor; and

generate a gain signal and a phase signal using the eye  
 movement information, and the head movement  
 information; and

measure an ocular performance characteristic selected  
 from the group of:

vestibulo-ocular reflex;

ocular saccades;

pupillometry;

pursuit tracking during visual pursuit;

vergence;

eye closure;

focused position of the eyes;

dynamic visual acuity;

kinetic visual acuity;

retinal image stability;

foveal fixation stability; and

nystagmus.

\* \* \* \* \*